

# 2018 – 2019 EDUCATION GUIDE

---

Your essential guide to education  
in Jakarta and beyond



# GLOBAL JAYA SCHOOL



Emerald Boulevard, Bintaro Jaya  
Sektor IX Tangerang, 15224  
Tel: +62-21 745 7562  
Fax: +62-21 745 7561

## Age group

Kindergarten: 4 (before 31<sup>st</sup> October)  
Reception: 5 (before 31<sup>st</sup> October)  
Year 1: 6 (before October 31)

## Average number of class

- PYP: 2 – 3 classes per year level
- MYP: 4 – 5 classes per year level
- DP: 6 classes per year level

## School terms

Four terms for each academic year:

- July to September
- October to December
- January to March
- April to May

## School fee range

*Development Fee*

Rp23,000,000 (1 year)

Rp98,800,000 (6 years in advance)

*Yearly Tuition Fee*

Kindergarten: Rp58,850,000

Reception: Rp58,850,000

Year 1 – 6: Rp97,900,000

Year 7 – 10: Rp112,640,000

IB Diploma Year II – 12:

Rp135,949,000

*Other fees*

Termly Tuition Fee is also available

## Email

ask@globaljaya.com

## Website

www.globaljaya.com

Global Jaya School (GJS) is located in a beautiful and popular area called Bintaro Jaya, which is a suburb of Jakarta. GJS is an International Baccalaureate (IB) World School. This status reflects a rigorous self-evaluation and training process of which we are very proud. We are pleased to be authorised to offer three IB programmes: Primary Years Programme (PYP), Middle Years Programme (MYP), and the IB Diploma Programme (DP). In addition, we are accredited by the Western Association of Schools and Colleges (WASC) and a full member of the East Asia Regional Council of Schools (EARCOS).

Global Jaya School is a non-denominational community that encourages and teaches respect for others by valuing Indonesian culture while embracing international cultural awareness. Our school uses an international curriculum that fully supports mother tongue language development.

Our students are our strongest asset and are at the centre of our community. GJS students are talented, principled and active in their school lives. We are committed to delivering well-rounded academic and extracurricular programmes that prepare students to participate in the international community as valuable team members and leaders.

Communication with parents is of great importance to the teachers at GJS. Parents are regularly informed about their child's progress through online reports, student portfolios, as well as e-communication such as ManageBac, Facebook, Twitter, Instagram and YouTube video streaming. Active parent participation is encouraged to support the learning experiences provided by our dedicated and professional teachers; we find much better outcomes when parents are engaged and interested in their child's academic pursuits.

Please take the time to browse our website, and if you have any queries kindly contact the school. We recommend that you take a personal tour of our purpose-built campus and experience the quality programmes and family atmosphere of our community.



# WE PROVIDE BALANCE.



We understand the importance of balancing different aspects of our lives—intellectual, physical, (spiritual) and emotional—to achieve well-being for ourselves and others.

We recognize our interdependence with other people and with the world in which we live.

Learn positively from successes and from failures.

Become involved in a variety of learning opportunities, curricular and extracurricular.

Are able to listen to the ideas of others as well as express their own.

Take different roles in groups, sometimes leading, sometimes supporting.

*Source: Global Jaya School's IB Learner Profile*

**GLOBAL JAYA SCHOOL**  
Emerald Boulevard Bintaro Jaya Sektor IX  
Tangerang 15224  
021 - 7457562

FACEBOOK  
**GJS Society**

TWITTER  
**@globaljaya**

INSTAGRAM  
**@gjs\_society**

WEBSITE  
**www.globaljaya.com**

Dear Parents,

## **Welcome to *Indonesia Expat's* annual education directory!**

There is nothing more important in a young person's life than education, and parents have no greater responsibility than to find the right school for their children. This is difficult enough in your home country, but when you are an expat who has chosen life on the road and you find yourself in an unfamiliar country, where do you start and how do you even begin to evaluate all the available options?

A good school needs to provide more than just learning. It also needs to provide students with a safe and healthy environment in which to learn, it needs to foster their social and spiritual development in a manner which suits you, and it needs to encourage them to grow and become confident, responsible adults. In addition, good schools need to stay up-to-date with the latest trends in education and adapt their teaching methods and syllabuses to meet the demands of the future, ensuring outcomes that will help students achieve success while making a valuable contribution to society.

In an effort to assist you with the daunting task of choosing the right school for your children, *Indonesia Expat* is proud to present the 2018 issue of its annual Education Guide. Inside you will find all the details you need to help you make one of the most important decisions you will ever make.

I hope you find it useful.

Happy parenting!

Edo Frese



PT. Koleksi Klasik Indonesia | Alamanda Tower 25<sup>th</sup> floor, Jl. T.B Simatupang kav 23–24 Jakarta 12430  
T: 021 2965 7821 | F: 021 2965 7821 | Office hours: 09.00–17.00 (Monday–Friday)  
E: [info@indonesiaexpat.biz](mailto:info@indonesiaexpat.biz) | W: [www.indonesiaexpat.biz](http://www.indonesiaexpat.biz)



Australian Independent School (AIS) provides an internationally recognised standard of education in a stimulating, vibrant, inclusive environment, starting from pre-school right through to senior secondary school.

Our student-centered approach and values-based teaching,

supported by a very low student to teacher ratio (in Primary classrooms we have 3 adults in every classroom) enables us to have an individual focus on every student that delivers outstanding results. Through our exceptional curriculum, structured experiences outside of the classroom and extensive range of

extra-curricular activities, we very effectively balance academic and personal development.

Our Senior Secondary International Baccalaureate (IB) Diploma program ideally sets our students on the path to discovering their passions and place in their future.

## Why an Australian Education?

Australia's interactive teaching approach encourages student participation and develops confidence and effective communications skills. These skills are highly valued by international tertiary institutions,

where great importance is placed on developing the ability to think creatively and independently, read widely and critically, participate in debate and function in teams.

The key to success is providing the right learning environment staffed by

caring teachers who love to teach and nurture each student's special talents. All students are given the opportunity to achieve their personal best and to work at their own level in each subject area. The syllabus is adapted and structured to allow our students to build on their knowledge and experiences.

### JAKARTA

Kemang  
(62-21) 7179 2949  
Pejaten  
(62-21) 782 1141, 782 4024

### BALI

(62-361) 845 2000

[admissions@ais-indonesia.com](mailto:admissions@ais-indonesia.com)  
[www.ais-indonesia.com](http://www.ais-indonesia.com)



# ACG SCHOOL JAKARTA



Jl. Warung Jati Barat  
(Taman Margasatwa) No. 19  
Jati padang, Pasar Minggu  
South Jakarta 12540  
Tel: +62-21 2978 0200

**Principal**

Dr. Stuart Tasker

**Age group**

Kindergarten: 3 to 5 years  
Primary: 5 to 11 years  
Secondary: 11 to 18 years

**Average number of pupils per class**

Kindergarten: 15 to 20  
Primary: 18 to 22  
Secondary: 18 to 22

**School terms**

1<sup>st</sup> semester: August to December  
2<sup>nd</sup> semester: January to June

**School fee range**

Rp156 to 320 million

**Instagram**

acgjakarta

**Facebook**

ACG.Jakarta

**Twitter**

ACGJakarta

**Email**

acgikt@acgedu.com

**Website**

jakarta.acgedu.com

ACG School Jakarta is an international school based in South Jakarta offering world-class education from kindergarten (three-year-olds) to year 13 (18-year-olds). Our Primary curriculum (kindergarten to Year 6) is developed through the framework of the International Baccalaureate Primary Years Programme (IB PYP). The Cambridge Assessment International Education (CAIE) curricula are followed in Secondary for students in Years 7 to 11, with the Lower Secondary curriculum leading to checkpoint examinations at the end of Year 9 and the International General Certificate in Educations (IGCSE) examinations at the end of Year 11. Our graduation qualification is the highly-respected international Baccalaureate Diploma Programme (IBDP).

We are committed to ensuring that each individual student receives our support, our genuine interest and our professional expertise in order to achieve their very best. We actively value scholarship, encourage academic pursuits and help young people to believe in themselves. We recognise the importance of encouraging young people in their positive pursuits, be they academic, creative, musical, artistic or sporting.

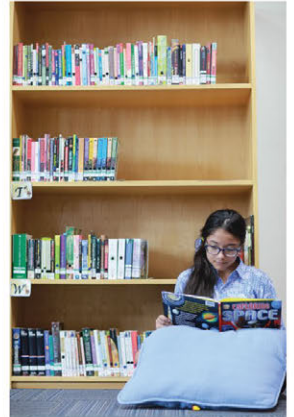
ACG School Jakarta students also enjoy the future benefits of being part of a large educational organisation of schools and can apply for scholarships to continue their studies at ACG in New Zealand. The strong international links between New Zealand, Vietnam and Indonesia assure parents that students attending ACG schools will truly experience the highest standards and the best quality education available. ACG School Jakarta is also proud to be a member of JASIS (Java Association of Small International Schools) which offers our students inter-school sporting, academic and social opportunities, whilst maintaining the benefits of remaining in a small caring campus.

**Entry Requirements**

Last two years of school report, ELS assessment (if necessary), interview with principal.



# World-class education in Jakarta



ACG School Jakarta is an authorised IB World School where students progress through the IB Primary Years Programme, Cambridge Assessment International Education examinations (Years 7 to 11), and the IB Diploma Programme (Years 12 and 13).



Proven quality teachers



School facilities



Over 30 nationalities



University Pathway



Family-feel school



School bus service



**CAMBRIDGE**  
International Examinations  
Cambridge International School

For more information or arranging a guided tour, please contact our admissions team  
+62-21-2978 0200 | [acgjkt@acgedu.com](mailto:acgjkt@acgedu.com) | [jakarta.acgedu.com](http://jakarta.acgedu.com)  
Jl.Warung Jati Barat No 19, Jati Padang, Pasar Minggu, Jakarta Selatan, 12540, Indonesia

# BALI ISLAND SCHOOL



Jl. Danau Buyan IV No. 15,  
Sanur, Bali 80228  
Tel: +62-361 288 770  
Fax: +62-361 285 103

**Head of School**  
Denise Walsh

**Head of Admissions**  
Lily Sirait

**Age group**  
3 to 19

**Average number of pupils  
per class**  
20 students

**School terms**  
August 2018 to June 2019  
Term 1: August to October  
Term 2: October to December  
Term 3: January to March  
Term 4: April to June

**School fees range**  
Rp50 million to 250 million

**Email**  
admissions@baliis.net

**Website**  
www.baliislandschool.com

## Entry Requirements

The school will admit students who can benefit from the education offered. A child will only be admitted if the school can offer a programme that will meet his or her individual needs. This will be discussed with parents at the initial stages of the application process prior to any formal application being made or accepted.

## IB Diploma and Admissions

BIS offers the IB Diploma courses in the final two years of school. Given the nature of the curriculum, BIS is only able to admit students who have the English language background to successfully access the courses of study.

## Curriculum

International Baccalaureate Programme from Preschool to Grade 12

Bali International School opened in September 1985 and was renamed Bali Island School (BIS) in December 2014 in accordance with the Ministerial Decree on Education. BIS is the preferred school for internationally-minded families and the only IB Continuum School in Bali. BIS is fully authorised by the International Baccalaureate to deliver the Primary Years, Middle Years and Diploma Programmes from Preschool to Grade 12.

BIS engages and empowers globally-minded, confident learners to reach their utmost potential in an active, creative, and respectful learning community. BIS values are derived from the IB Learner Profile. Through these attributes BIS embeds the concept of internationalism and provides opportunities for leadership within the community and into the curriculum. All members of the BIS community strive to be reflective, risk-takers, balanced, knowledgeable, inquirers, thinkers, communicators, principled, open-minded and caring.





# BALI ISLAND SCHOOL (BIS) IS THE ONLY SCHOOL IN BALI THAT OFFERS IB WORLD SCHOOL CONTINUUM

Bali Island School is an IB World School, fully authorized by the International Baccalaureate to deliver the Primary Years, Middle Years and Diploma Programmes from Preschool to Grade 12.

## WHY BIS?

- IB World School since 1998.
- Dedicated, experienced international teaching staff.
- Outstanding education outcomes and university placements.
- Strong arts, athletics and extracurricular programs with the best sports facilities on the island.
- School campus sits in a secure and quiet location that is easily accessible.
- Open for students of Indonesian nationality.
- Proactive parent association.



BIS engages and empowers globally-minded, confident learners to reach their utmost potential in an active, creative, and respectful learning community.

Fully accredited / authorized by:  
The International Baccalaureate (IB)  
The Council of International Schools (CIS)  
Western Association of Schools and Colleges (WASC)



## Bali Island School

for a World-Class Education

Jalan Danau Buyan IV No. 15, Sanur, Denpasar, Bali - Indonesia

Phone: **+62(0)361 288770**

Email: **admissions@baliis.net**



**baliislandschool.com**

## BINUS SCHOOLS



### **BINUS SCHOOL Simprug**

Jl. Sultan Iskandar Muda Kav.G-8,  
Simprug, Jakarta Selatan 12220  
Principal: Mr Peter Matthew Saidi  
T: +62-21 724 3663 ext. 4120–4122  
E: admissions@binus.edu  
W: simprug.binus.sch.id

### **BINUS SCHOOL Serpong**

Jl. Lengkong Karya - Jelupang  
No. 58, Serpong, Tangerang 15310  
Principal ECY–EL : Ms Elsie L. Bait  
Principal MS–HS: Ms Sherrierose  
Garcia Gonzales  
T: +62-21 538 0400 ext. 5101–5104  
E: serpong-admissions@binus.edu  
W: serpong.binus.sch.id

### **BINUS SCHOOL Bekasi**

Jl. Saraswati No. 1,  
Bumiwedari, Vida Bekasi 17156  
Principal: Ms Anwin Samsudi  
T: +62-21 8261 7799 ext. 7787–7789  
E: bekasi-admissions@binus.edu  
W: bekasi.binus.sch.id

### **Age group**

3 to 18

### **School terms**

1<sup>st</sup> Semester (July to December)  
2<sup>nd</sup> Semester (January to June)

### **Average number of pupils per class**

ECY (20 to 24)  
EL (22 to 28)  
MS–HS (24 to 28)

### **School fee range**

Please contact Admissions Office  
for further details

### **Curriculum**

International Baccalaureate (IB) and Cambridge Programme

For more than 35 years, BINA NUSANTARA Group has maintained a fine reputation for innumerable positive contributions to Indonesia. Here, the teaching and learning process is highly valued and teachers work hand-in-hand with students to help them achieve their personal best.

The three school campuses are co-educational, multi-denominational, and cater for pre-school to high school students. BINUS SCHOOLS also leverage enormous IT infrastructure and resources for which BINA NUSANTARA is well known.

Numerous community-oriented services, interschool events, international student conferences, both local and overseas immersions add to further enrich the multi-faceted development of BINUS SCHOOLS students.

### **DISCOVER YOUR POTENTIAL, CHAMPION A BETTER FUTURE**





# Discover Your Potential Champion a Better Future



**NEW INTAKE REGISTRATION FOR 2019-2020  
OPENS IN SEPTEMBER 2018**

**BINUS SCHOOL SIMPRUG**

☎ (021) 724-3663

📘 BINUS SCHOOL Simprug  
📷 binusschool\_simprug

**BINUS SCHOOL SERPONG**

☎ (021) 538-0400

📘 BINUS SCHOOL Serpong  
📷 binusschoolserpong

**BINUS SCHOOL BEKASI**

☎ (021) 8261-7799

📘 BINUS SCHOOL Bekasi  
📷 binusschoolbekasi

[www.binus.sch.id](http://www.binus.sch.id)

# BRITISH SCHOOL JAKARTA



Bintaro Jaya Sektor 9,  
Jl. Raya Jombang Ciledug,  
Pondok Aren, Tangerang 15227  
Tel: +62-21 745 1670

### Principal

Mr Shane Nathan (to July 2018);  
Mr David Butcher (from August  
2018).

### Age group

3 to 18

### Average number of pupils per class (from August 2018)

Foundation Stage: 17  
Primary: 19  
Years 7 to 11: 22  
Years 12 to 13: 12, with some classes  
as small as five students

### School terms

Term 1: August to December  
Term 2: January to March/April  
Term 3: April to June.

### School fee range

Visit [www.bsj.sch.id/246/school-fees](http://www.bsj.sch.id/246/school-fees)  
for details of the current school fees

### Email

[admissions@bsj.sch.id](mailto:admissions@bsj.sch.id)

### Website

[www.bsj.sch.id](http://www.bsj.sch.id)

Founded in 1974 with support from the British Embassy, BSJ is a not-for-profit international school with British heritage, for boys and girls from around the world aged three to 18.

The School is located in 18 hectares of green space, on the south-westerly outskirts of Jakarta. Around 1,400 children study at BSJ, and there are over 130 members of academic staff, most of whom trained in the United Kingdom (UK).

At Foundation Stage, BSJ follows the UK's Early Years Curriculum. In Years One to Six, BSJ teaches a blend of the National Curriculum in England and the International Primary Curriculum.

Students in Years Seven to Nine follow an academic programme based on the National Curriculum of England and Wales, adapted to an international context. The curriculum in Years Ten and 11 culminates in IGCSE examinations, set in the UK. In Sixth Form, students study for the International Baccalaureate diploma.

Students from BSJ go on to attend some of the most selective universities globally, with the majority opting to study in the UK and USA.

### Entry Requirements

Applicants take an entry test to assess their academic standing, and abilities in cognition and the English language. When a year group is full, applicants may be placed on a waiting list.



An international school with British heritage,  
for boys and girls from around the world aged 3 to 18.



**BRITISH SCHOOL JAKARTA**  
a bridge to the world



For more information or to apply for a place, please contact the Admissions Office  
+62 (21) 745 1670 • [admissions@bsj.sch.id](mailto:admissions@bsj.sch.id) • [www.bsj.sch.id](http://www.bsj.sch.id)

# CANGGU COMMUNITY SCHOOL



Jl. Subak Sari, Banjar Tegal Gundul,  
Tibubeneng, Badung, Bali 80361  
Tel: +62-361 844 6391

**Mobile**

+62-812 3917 6778  
+62-851 0052 3639

**Principal**

Head of School: Beccy Fox  
Head of Primary: Warren Bowers  
Head of Secondary: Keegan Combs

**Head of Admissions**

Ms Ruth De Jong

**Email**

admissions@ccsbali.com  
mail@ccsbali.com

**Website**

www.ccsbali.com



Canggu Community School

Canggu Community School has over 450 students from more than 40 different countries. From the Early Years until Year 9, we offer an international curriculum based on the English National Curriculum, the Indonesian National Curriculum and research-based best practices for learning. Students learn through inquiry and we encourage diversity and independence. In Years 10 and 11, students work towards the IGCSE examinations. Year 12 and 13 students work towards the International Baccalaureate (IB) Diploma. Our IB results last year are a testament to our hard-working students and our rigorous academic programme. For the past two years, our average DP scores have been significantly higher than the world average.

Canggu Community School (CCS) operates a widely inclusive admissions policy. The school's philosophy is based on the belief that all students can succeed and that their motivation, self-discipline and perseverance are integral to their success in all the school programmes. CCS admits students whose academic, personal, social and emotional needs can be met by the School's programmes and services, and who can be integrated into a mainstream classroom. We have a Learning Support department to assist with students who have learning or language needs.

Teacher nationalities include the United Kingdom, Canada, Australia, United States, New Zealand and, of course, Indonesia. As well as achieving academically, students at CCS are encouraged to be physically active, socially responsible and develop skills for life-long learning.





# Accepting enrollments

for August 2018 Academic Year 2018/2019



Canggu Community School  
www.ccsbali.com | e-Mail: admissions@ccsbali.com



# GMIS JAKARTA



Jl. HBR Motik, Bock D6, Kav. 1  
Kota Baru Bandar Kemayoran,  
Central Jakarta 10630  
T: +62-21 6586 5686 / 6586 5667-9  
F: +62-21 6586 5677

### Principal

Mr A.P. Singh

### Admissions Officer

Ms Yuni Ernawati  
(Direct Line : +62-21 6586 5685)  
(Mobile (WA): +62-858 1331 1217)

### Age group

3 – 18

### Average number of pupils per class

18 – 24 students

### School terms

1<sup>st</sup> Term: July – November  
2<sup>nd</sup> Term: January – May

### School fee range

Rupiah equivalent of US\$ 4,620 to  
US\$ 8,800 per year (Preschool to  
IBDP)

### Email

headmaster@gandhijkt.org

### Website

www.gandhijkt.org

### Entry Requirements

1. Submission of completed application form for admission and documents (previous school academic records of three years, copy of birth certificate, health fitness report, parents' and student's passport copies, KITAS/KTP, etc.)
2. Student's entrance test
3. Interview

### Curriculum

The Gandhi Memorial Intercontinental School Jakarta was established in 1950 and is one of the oldest International schools in Indonesia.

We are authorised by the IBO, Geneva to offer the four programmes, PYP, MYP, Diploma and Career-related Programme. GMIS Jakarta is the first school and the only school in Indonesia to offer all four programmes of IB.

GMIS was the first school in Indonesia to be authorised by Cambridge University UK to conduct IGCSE, Primary Checkpoint, Secondary Checkpoint and ICT examinations.

We offer Higher Secondary Certificates and Matriculation from the Board of Secondary Education Indian Schools Indonesia.

We also prepare our Indonesian students for Ujian Nasional in SD, SMP and SMA.

At GMIS we are constantly evolving and changing to keep up with the times.

The school prides itself on its holistic outlook and values.

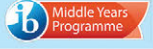
A major strength of our school is its rich cultural mix, with children from around 40 countries interacting and learning together.





**ATTRACTIVE EARLY BIRD DISCOUNTS**

FOR DETAILS CONTACT :  
Admissions Office  
• Ms. Yuni 0858 1331 1217  
• Email : admissions@gandhijkt.org



\*GMIS is the only school in Indonesia authorized for all 4 IB Programme

# World-Class International Education

WHERE INNOVATION, CREATIVITY AND DEEP UNDERSTANDING ARE ENCOURAGED

- Very experienced, caring and highly qualified teachers.
- Outstanding IGCSE & IB Diploma results - well above world average.
- We offer the most affordable and flexible payment plans.
- GMIS has been offering scholarships to needy and deserving students from Nursery to Grade 12 for the past two decades.
- New ultra-modern campus, centrally air-conditioned, 250 CCTV cameras; hi-speed WI-FI; Physics, Chemistry, Biology and 3 large Technology and computer laboratories with modern equipment; 2 advanced language labs; intensive Mandarin programme; state-of-the-art auditorium (seating capacity: 1000); music studios, medical clinic with full time doctor & nurse; modern air-conditioned gymnasium; indoor swimming pool; soccer field; multi cuisines food court.
- Oldest international school in Indonesia.



**AUTHORIZED BY IB GENEVA FOR**

- IB PYP Early Childhood Education (Nursery - KG - Prep)
- PYP (Grades 1 to 5)
- MYP (Grades 6 to 10)
- IBDP (Grades 11 & 12)
- IBCP (Grades 11 & 12)

**AUTHORIZED BY CAMBRIDGE (CIE - UK)**

- CCP - Cambridge Checkpoint Primary (Grade 5)
- Cambridge Checkpoint Secondary I (Grade 8)
- IGCSE (Grades 9 & 10)
- Oldest Cambridge affiliated school in Indonesia (ID No. 007)

**UJIAN NASIONAL (SD - SMP - SMA)**



**SUSTAINED EXCELLENCE:** Year after year an increasing number of our Grade 12 graduates (IB Diploma & Higher Secondary) make it to the top universities in the U.S.A., U.K., Australia, Singapore (NUS), Switzerland, India, Indonesia, Korea, Canada, Philippines, Sri Lanka (including medical schools in U.K. Australia, Indonesia, India etc.) and become contributing citizens of the world .



**THE GANDHI MEMORIAL INTERCONTINENTAL SCHOOL JAKARTA**  
Jl.H.B.R Motik, Kota Baru Bandar Kemayoran, Blok D6  
Kav. No. 1, Near (PRJ), Jakarta Pusat - 10630 INDONESIA,  
Tel: (62-21) 65865667-9, Fax: 65865677  
http://www.gandhijkt.org

# HANSOL KIDS PRESCHOOL & BRAIN EDU CENTER



## Hansol Kids Preschool and Brain Edu Center

Jl. Pangeran Antasari No.19, Cipete Selatan, Cilandak, South Jakarta  
Tel: +62-21 765 6588

### Principal

Park Hyun Soon

### Head of Admissions

Victoria Han (Hansol Kids Preschool)  
Ally Park (Brain Edu Center)

### Age group

1.5 to 6

### Average number of pupils per class

10 per class (Hansol Kids Preschool)  
6 per class (Brain Edu Center)

### School terms

4 terms

### School fee range

*Hansol Kids Preschool*  
Rp7,979,000 – 13,025,000 / term  
*Brain Edu Center*  
Rp9,000,000 – 15,000,000 / term

### Email

[hansolkids.id@gmail.com](mailto:hansolkids.id@gmail.com)

### Website

[www.hansolbe.com](http://www.hansolbe.com)

## HANSOL KIDS PRESCHOOL

### Entry Requirements

Copy of birth certificate / Passport of child & guardian immunisation record / medical documentation / two passport-size photographs.

### Curriculum

We operate an integrated curriculum based on a project approach to enable interactive learning, led by teachers and children. A project approach is an in-depth study of a specific topic that a child performs individually or collectively. Situated within a pre-planning of the teacher's theoretical framework, the children are encouraged to participate and contribute to the topic of interest. We encourage interaction between teacher and student, cognition and creative development, as well as providing an educational environment of over 2,000m<sup>2</sup> with age Appropriate Learning Materials, Spacious Playground, Swimming Pool, Putt Putt Golf and Special Classrooms for creative Activities.



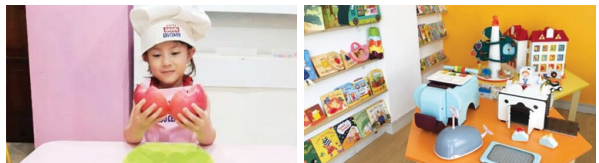
## BRAIN EDU CENTER

### Entry Requirements

Copy of birth certificate / passport of child & guardian immunisation record / medical documentation, two passport-size photographs.

### Curriculum

The Brain Edu Center information studies focuses on knowledge and skills for children by showing them different ideas and methods. The school offers programmes such as Davinci, a basic gifted programme to build cognitive and integrated skills, followed by Surinori, a programme that creates math concept, I-Know, a programme that focuses more on scientific knowledge, Gabe, a math programme that uses material and Gym, a programme based on athletic sports that stimulates the growth of children. Lastly, the school also provides a cooking programme in which children to do the measuring and the baking.





**Hansol Education**

AWARDED 2 GRAND PRIZE  
FOR EARLY CHILDHOOD  
EDUCATION COMPANY

**" HELP YOUR  
CHILD REACH  
NEW HEIGHTS. "**



**ENROLL NOW**



"We operate an integrated  
curriculum based on  
a project approach"  
Toddler - Nursery - K1 - K2



**JL PANGERAN ANTASARI  
NO. 17 & 19, CIPETE SELATAN  
CILANDAK, JAKARTA SELATAN**



**021)765-6588**



New Concept of Brain  
Development  
Educational Center

**FREE TRIAL**  
at NZIS

**The New Zealand**  
**Independent School**  
*Nurturing Creative Minds*



Established in 2002, NZIS is a co-educational day school open to students of all nationalities from Preschool, Primary to Secondary JC 2



**EARLY YEARS - PRIMARY - SECONDARY CAMPUS**

Jl. Kemang Selatan I #1A, Kemang, Jakarta 📍 (+62.21) 718 3222

• [info@nzis.school.nz](mailto:info@nzis.school.nz)

[www.nzis.school.nz](http://www.nzis.school.nz)

# HERITAGE SCHOOL



## Curriculum Basis

Cambridge Primary Checkpoint, IGSCCE, and AS/A Level

## General Information

Heritage School is committed to provide the best possible education to help students become successful adults, starting from kindergarten and continuing through Grade 12. Our school offers a variety of programmes that will prepare them for college and careers when they graduate.

We focus on nurturing students to give them a complete education of academic skills and and godly character building.

We offer the best opportunity to learn and grow and encourage students to always do their best. We also prepare our students for the challenges of globalised world that demands them to have new knowledge and abilities; a world that requires the students to be adaptable, self-motivated learners in a continuous changing scenario of new skills.

Our team of qualified and experienced teachers have been specially trained to provide personalised attention to every student.



The Bellezza Shopping Arcade  
3<sup>rd</sup> floor, Jl. Letjen Soepeno No. 34,  
Permata Hijau, Kebayoran Lama  
South Jakarta  
Tel: +62-21 3006 6858-60  
Fax: +62-21 3006 6857  
HP: +62-895 2861 2782

## Age group

Early Years: 3 – 5  
Lower Grade: 6 – 11  
Junior High: 12 – 14  
Senior High: 15 – 17

## Average number of pupils per class

15 – 20

## School terms

Term I: July – September  
Term II: October – December  
Term III: January – March  
Term IV: April – June

## Entry requirements

Trial and class assessment,  
student must be at class age  
level on December 31 of  
the year of enrolment

## School fee range

Please contact Admissions Officer  
for further details

## Email

info@heritage.sch.id

## Website

www.heritage.sch.id

# ICHTHUS SCHOOL



**ICHTHUS**  
SCHOOL

## South Campus

Jl. Caringin Barat No. 1,  
Cilandak Barat, South Jakarta

Tel: +62-21 7590 8820

Fax: +62-21 7590 8820

## West Campus

Jl. Surya Mandala III Blok N II No. 11,  
Sunrise Garden, West Jakarta

Tel: +62-21 581 2228

Fax: +62-21 581 2229

## Head of Admissions

Ms Nina Raganatha (Ichthus South)

Mr Andryan (Ichthus West)

## Age group

Primary (6 to 12)

Secondary (12 to 16)

## Average number of pupils per class

20 to 24 students

## School terms

1<sup>st</sup> semester (July to December)

2<sup>nd</sup> semester (January to June)

## School fee range

Please contact our admissions  
for further details

## Email

marketing@ichthusschool.com

## Website

www.ichthusschool.com

## Entry Requirements

Ichthus School accepts local and international students from all faiths and nationalities. All students will sit for an Entrance Test prior to acceptance into Ichthus School.

## Curriculum

Ichthus School's Primary curriculum uses an integrated, eclectic curriculum focusing on the student's individual learning styles and strengths through the development of projects for each theme. The comprehensive and integrated curriculum of Ichthus School meets the rigorous requirements of various international accreditation bodies like WASC and ACSI. Ichthus School's curriculum is fully accredited by WASC and ACSI.

Our Secondary curriculum is designed around but not limited to the Cambridge secondary curriculum. Students sit for the external Cambridge IGCSE and A levels examinations in Grades 10 and 12 respectively. Indonesian students have the choice to sit for the Ujian Nasional in Grades 6, 9 and 12 as well.

Ichthus School is known for its strong academics and value-based education, with an emphasis on the Christian faith and character building. The school embraces creativity and multiple intelligence, collaborative and cooperative learning, entrepreneurial skills, sports and fitness, and performing and visual arts, as well as community services.

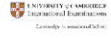




**ICHTHUS**  
SCHOOL

Primary - Secondary - A Level

A Christian School with International Standards



PRIMARY | SECONDARY | A-LEVEL

**OPEN**  
REGISTRATION  
-----  
For New  
Academic Year

Congratulations Ichthusians!



"So that, whoever comes will have a transformed life"

Ichthus Schools was established 18 years ago with the vision that ***"Whoever comes will have a transformed life"***.

Core to the heart of Ichthus Schools is our vision to see transformation in our students – a transformation where our students will make a positive impact to their surroundings, neighborhood, nation and in the global arena.

Ichthus Schools Ichthus School

[ichthus\\_sij@cbn.net.id](mailto:ichthus_sij@cbn.net.id)

[www.ichthusschool.com](http://www.ichthusschool.com)

# THE LOOMING GLOBAL LEARNING CRISIS

BY JASPAL SIDHU



panelists Emma Bourne (MD Asia Mcmillan Education), Rob Grimshaw (CEO TES Global) and Elizabeth Dulvy (Senior Education specialist, World Bank).

The panel examined the alarming World Bank Development Report on education. The report talks of a global learning crisis. Its main message is that education is presently leaning towards “schooling without learning”. It warns that primary and secondary schools are failing to educate the young properly for the 21<sup>st</sup> century and these students will lose the opportunity to earn higher wages when they get into the job market. The learning crisis, it states, will widen the social gap instead of narrowing it.

We had a lively debate. The questions came fast and furious from the more than 300 members of the audience and the very sharp moderator.

Did we agree that there was a global crisis? Indeed, we did. In developing countries from the African continent to Indonesia, where enrolment in schools has increased, there is no corresponding improvement in learning outcomes.

**Every two years** the International Finance Corporation (World Bank) invites top executives, progressive schools, policy makers and thought leaders from all over the world to participate in an exclusive gathering known as the Global Private Education Conference. The prestigious assembly allows for the exchange of ideas, best practices and knowledge in the world of education

This year it was held in beautiful Cape Town, South Africa, and I had the privilege to be on a panel moderated by Salah Kandiri (Global Head of Education, IFC-World Bank) with fellow

The Organisation for Economic Co-operation and Development (OECD) conducts a review of world-wide education systems through their Programme for International Student Assessment (PISA) which looks at problem-solving skills of 15-year old students. The latest PISA rankings puts Singapore and its education system as the number one country in the world in math, science and reading as well as comprehension skills. The US, Australia and the UK were not in the top ten. Indonesia’s position was also not flattering. Enrolments in schools from these countries were up, but learning outcomes were sliding.

With its 55 million students, three million teachers and 235,000 schools, Indonesia is the fourth-largest education system in the world. Kudos to the Indonesian government. The illiteracy rate of the population has decreased from 12.74 percent in 1994 to 6.02 percent in 2012. The percentage of people who never attended school dropped from 13.79 percent in 1994 to 5.88 percent in 2012. The increase in expenditure for education has resulted in an increase in access to schooling. But learning outcomes are still not improving.

Indonesia is not alone. Similar trends are seen in other countries in the world as they slide down the PISA rankings. The learning crisis is indeed a global phenomenon.

The panel had several views around what was causing this crisis. The general consensus was that there needs to be a renewed focus on teachers if we are to reverse the trend.

The discussion on the shortage of good teachers world-wide turned to a short examination of motivational factors around the teaching profession.

As a founder and chairman of the SIS group of schools, I had my views on this topic. I said schools need to look beyond the education industry for ideas to motivate teachers. For example, employees in other industries have clear, negotiated KPIs (Key Performance Indicators) upon which they are examined, held accountable and rewarded. These KPIs are typically aligned with the corporation's strategic plans. I argued schools can look at such models. A teacher's KPIs can include for example, international test scores, level of parent engagement, participation in non-classroom activities like clubs and sports, familiarity and use of technology, participation in self-improvement courses, and even feedback of peers, parents and students, the idea being to have a clear and measurable system to identify good teachers and reward them accordingly. One that is aligned with the school's overall strategic plan.

I shared how great teachers within my network of SIS schools were being identified and rewarded, a system that took the attrition rate down to very impressive levels. I shared also how having highly motivated teachers within the SIS network of schools has resulted in all round outstanding student performances. (Side note; interestingly I since have had offers to establish SIS schools in Africa and Europe.)

Moving on, there was also a discussion on the role of technology and if indeed technology can replace the teacher in the classroom. Again, there was consensus here. The panel felt that teachers cannot be replaced by technology, and technology in classrooms is in fact an enabler of meaningful learning. Therefore, teachers should be trained to use technology effectively in classrooms to make learning fun and interactive.

Finally, the question turned to 21<sup>st</sup> century skills and how many schools were not doing enough to prepare the young for an unpredictable world. The panel highlighted the need for our young to be collaborators and creative thinkers especially given the challenges they will face in the shrinking job market. Subject content understood and learned in schools needs to be applied to real life situations, and teachers therefore need to have the right pedagogical skills. The discussion again turned to teachers and how they can play a role in molding the young to prepare them for colleges and universities with fast changing entry requirements.

The lively discussion in Cape Town came to an end with one common thought; The learning crisis is real. Schooling without learning is a problem that needs to be addressed now. And there needs to be a renewed and immediate focus on teachers.

---

*Jaspal Sidhu is the Founder and Chairman of the Singapore Intercultural School (SIS) group of schools. SIS is a network of schools in Indonesia and the region operating in strategic partnership with IFC, World Bank.*

# JAYAKARTA MONTESSORI

## JAYAKARTA montessori SCHOOL

Jl. Kemang Selatan I, Blok LI,  
South Jakarta 12730  
Tel: +62-21 719 4907 / 719 4908

### Principal

Gloria Lau, Siti Rohmattun

### Head of Admissions

Siti Rohmatun

### Age group

1.5 to 11

### Average number of pupils per class

5 – 18 per class

(five students per adult ratio)

### School terms

Semester 1: August – December

Semester 2: January – June

### School fee range

Rp83,000,000 – 277,000,000

### Email

admin@jktmontessori.com

### Website

www.jktmontessori.com

### Entry Requirements

Children need only be of ages 1.5 to 11 years to be eligible.

### Curriculum

Located conveniently in Kemang, Jayakarta Montessori School is devoted to the education of children 1.5 to 11 years of age, and has developmentally appropriate programmes that foster creativity, self-confidence and a natural love for learning. Guided by skilled Montessori-trained teachers in English-speaking classrooms, we promote children's physical, social, emotional and mental development, thus providing an excellent foundation for life in larger schools.

The preschool focuses on practical life skills, motor skills, math and reading readiness, and social awareness. There is a focus on independence: a child's ability to dress and feed themselves, put things in their proper place, and share with their friends and peers, all while fostering a good attitude towards learning and adapting to the school routine.

The elementary curriculum is international in scope and includes science, social studies, arts, language and math. Children leave the primary school with a broad ability and knowledge that prepares them for the educational challenges ahead.

We are open for enrolments and inquiries all year, so please drop by anytime. You may visit during preschool hours in order to observe a classroom and some activities, 8am-12pm, Monday-Friday. Free trial classes are also available by appointment. We also have a summer school through the month of June, and after school activities for children three years and older.



# JAKARTA WORLD ACADEMY

## Curriculum

JAKARTA WORLD ACADEMY (JWA) offers Toddler to Kindergarten Two programme. For Toddler to Kindergarten One, Jakarta World Academy provides a challenging and engaging early years (EY) curriculum that develops students physically, intellectually, emotionally and socially. The Early Years curriculum bases students learning on the standards set out in the Early Years Foundation Stage (EYFS) Framework from the UK.

Within the Early Years Foundation Stage programme there are seven areas of learning. The prime areas begin to develop quickly in response to relationships and experiences, and run through and support learning in all other areas. The Prime Areas continue to be fundamental throughout the EYFS. The specific areas include essential skills and knowledge. They grow out of the prime areas, and provide important context for learning.

Jakarta World Academy is authorised to offer the Cambridge Primary programme for Kindergarten Two students. With its programmes, JWA provides a special focus on holistic development with a child-centred approach which helps students to begin to make sense of their world through a broad and balanced learning environment. English is the language of instruction, and all students study Bahasa Indonesia and Mandarin. JWA offers a strong Chinese programme in partnership with the prestigious Peking University Kindergarten and Elementary School, Beijing, China.



*Embracing the Future  
Embracing Asia*

CHUBB Square Building  
8<sup>th</sup> Floor Thamrin Nine Podium  
Jl. MH Thamrin 10, Jakarta  
Tel: +62-21 2993 7234

### Age group

Toddler: 12 – 23 months  
Nursery: 2 – 3 years  
Pre-Kindergarten: 3 – 4 years  
Kindergarten 1: 4 – 5 years  
Kindergarten 2: 5 – 6 years

### Average number of pupils per class

Toddler: 18  
Nursery: 18  
Pre-Kindergarten: 18  
Kindergarten 1: 18  
Kindergarten 2: 20

### School terms

4 terms, 2 semesters

### School fee range

Please contact Admissions office for further details

### Email

[admissions@jwa-jkt.com](mailto:admissions@jwa-jkt.com)

### Website

[www.jwa-jkt.com](http://www.jwa-jkt.com)

# KINDERLAND PRE-SCHOOL



## **Kinderland Pondok Indah**

Jl. Caringin Barat No. 1,  
Cilandak, South Jakarta  
Tel: +62-21 7590 8818

## **Kinderland Bonavista**

Jl. Bonavista Raya, Lebak Bulus,  
South Jakarta  
Tel: +62-21 769 2988

## **Kinderland Pakubuwono**

Jl. Pakubuwono IV No.1,  
Kebayoran Baru, South Jakarta  
Tel: +62-21 725 0320

## **Kinderland Pulo Mas**

Jl. Kayu Putih Raya No. 15 A,  
Pulo Mas, East Jakarta  
Tel: +62-21 470 6722

## **Kinderland Sunrise Garden**

Jl. Surya Timur Blok A No. 5, Kedoya,  
West Jakarta  
Tel: +62-21 580 2323

## **Kinderland Muara Karang**

Jl. Muara Karang Blok Y3-Timur  
No. 12, North Jakarta  
Tel: +62-21 660 2966

## **Age group**

Playgroup: 1 – 2  
Pre-Nursery1: 2 – 2.5  
Pre-Nursery2: 2.5 – 3  
Nursery: 3 – 4  
Kindergarten1: 4 – 5  
Kindergarten2: 5 – 6

## **Average number of pupils per class**

15 – 20 (2 teachers per class)

## **School terms**

Four terms in one academic year

## **School fee range**

Rp30,000,000 – 50,000,000 annually

## **Email**

[inquiry@kinderlandindonesia.com](mailto:inquiry@kinderlandindonesia.com)

## **Website**

[www.kinderlandindonesia.com/jakarta](http://www.kinderlandindonesia.com/jakarta)

## **Entry Requirements**

Admission open all year round. Students will be placed based on their age group.

## **Curriculum**

Kinderland offers quality, activity-based, educational programmes to nurture young minds. Parents are thus assured of continuity and consistency in the care and education of their children. Our exclusive KIC curriculum takes on a holistic approach to develop the total child.





Open  
For Registration  
For New Academic Year  
2018-2019  
Special Discount  
Available!

## SINGAPORE'S TRUSTED PRESCHOOL BRAND FOR OVER 30 YEARS

Kinderland Preschool believes that every child has the potential to be the best he or she can be. By preserving the excitement and wonder of childhood, children will be excited by the joy of the learning and become life long learners. Kinderland's objectives are to excite children about learning through participation in innovative and simulating programs, to enhance the social, physical, emotional, moral, and intellectual development of the child, and to encourage parental involvement in their child's education.



### Children Music Programme

Taught by professional music teachers, this core programme accelerates early childhood literacy as well as develops visual-spatial and numeracy skills.



### Literacy Through I.T.

Developed by IBM USA, this programme promotes language composition as well as free, confident expressions.



### KinderFit

This one-of-a-kind physical education programme nurtures healthy habits and lifestyle through cardio-wellness education.

### Our Centres

#### Kinderland Pondok Indah

Jl. Caringin Barat No.1 Cilandak Barat,  
Jakarta Selatan | Tel: (021) 7590 8818

#### Kinderland Pakubuwono

Jl. Pakubuwono IV No.1 Kebayoran Baru,  
Jakarta Selatan | Tel. (021) 725 0320

#### Kinderland Pulo Mas

Jl. Kayu Putih Raya No. 15A  
Pulo Mas, Jakarta Timur | Tel: (021) 470 6722

#### Kinderland Bona Vista

Jl. Bonavista Raya Bona Indah,  
Jakarta Selatan | Tel: (021) 769 2988

#### Kinderland Sunrise Garden

Jl. Surya Timur Blok A No. 5 Sunrise Garden,  
Jakarta Barat | Tel. (021) 580 2323, 580 1647

#### Kinderland Muara Karang

Jl. Muara Karang Blok Y3-Timur No.12  
Jakarta Utara | Tel: (021) 660 2966

# LYCÉE FRANÇAIS DE JAKARTA



Jl. Cipete Dalam no.32,  
South Jakarta 12410  
Tel: +62-21 750 3062

## Principal

Mr Jean-Pascal Gerber

## Admissions Officer

Ms Christina Puji

## Age group

3 to 18

## Average number of pupils per class

Kindergarten: 16

Primary: 18

Secondary: 20

## School terms

Term 1: September to December

Term 2: January to March/April

Term 3: April to early July

## School fee range

Rp110 to 220 million

## Email

secretariatprim@lfjakarta.org

## Website

www.lfdejakarta.org

## Entry Requirements

Application form and all required documents, parent and student interview with head of primary for bilingual classes.

## Curriculum

With 500 students from over 30 different nationalities, the French School of Jakarta (LFJ) is an inviting, family-friendly school where children feel comfortable. Following the French national curriculum of the Ministry of Education, under the supervision of highly qualified and experienced teachers and with special emphasis on foreign languages, LFJ helps students grow into global citizens by developing their knowledge, skills and creativity.

To accommodate non-French-speaking families wishing to join our school, we have created, for the past four years, a language integration class for children from 6 to 10 years old.

LFJ is accredited by the Agency for French Education Abroad and therefore is part of the AEFÉ network, the largest educational network in the world, with almost 500 schools in 137 countries. Wherever your professional life takes you, an AEFÉ school will be nearby, guaranteeing the quality requirements of the French educational system for your children.



# JAKARTA'S FRENCH SCHOOL

LYCÉE FRANÇAIS DE JAKARTA LOUIS-CHARLES DAMAIS



## GIVE YOUR CHILD THE OPPORTUNITY TO BECOME SOMEONE SPECIAL

- Accredited by the Agency for French Education Abroad (AEFE), network of almost 500 schools in **137 countries**
- Commitment to excellence with **highly qualified teachers**
- French national curriculum
- French Baccalaureat with optional European English Section
- French and English bilingual classes
- Multicultural environment with over **30 different nationalities**
- Strong emphasis on languages with **certification tests** (English, Spanish, Indonesian, Mandarin, German)



## HAVE YOU EVER WANTED YOUR CHILDREN TO LEARN FRENCH AND BE IN A FRENCH SCHOOL?

### NEW at LFJ : FRENCH AS A FOREIGN LANGUAGE INTEGRATION PROGRAM

To help welcome non-french speakers interested in a **French education for their children**, LFJ now offers an **intensive French beginner program**.

#### WHY?

Our new intensive ten months class-based program will give international children a good grounding in French, eventually allowing them to fully participate in classes taught in French by the end of the school year.

#### WHO?

The program is aimed at students aged between five and eight years old (grades one to three in the French elementary system).

#### WHAT?

Each student will follow a specific program focused on oral language. A team composed of the school head and a group of French language teachers will carefully monitor each student's achievements to ensure real progress, with close feedback to the student's family.

#### HOW?

Students will be placed in an age-appropriate class and will participate in a 26-hour per week French language program, from early September to end of June. Children will share their time between their language integration class and a mainstream class, initially participating in activities that do not require a high level of french language comprehension.



If you are interested in joining LFJ's program or would like further information, please contact:

**Lycée Français de Jakarta Louis-Charles Damais**  
Jl. Cipete Dalam No. 32, Cipete Selatan, Jakarta Selatan  
T: +62-21 750 3062 - [secretariatprim@lifdejakarta.org](mailto:secretariatprim@lifdejakarta.org)  
[www.lifdejakarta.org](http://www.lifdejakarta.org)

# MIGHTY MINDS



## Hang Tuah Branch

Jl. Hang Tuah Raya No. 19 and 35  
South Jakarta 12120  
Tel: +62-21 725 1810 / 7279 7718

## Menteng Branch

Jl. Hos Cokroaminoto No. 50,  
Menteng, Central Jakarta 10350  
Tel: +62-21 315 8558

## Kemang/Pejaten Branch (NEW\*)

Jl. Pejaten Barat Raya No. 15,  
Pejaten Barat, South Jakarta 12510  
Tel: +62-21 719 2332

## Age group

Six months to 6.5 years

## Average number of pupils per class

12 – 14

## School terms

Term 1: July – September  
Term 2: October – December  
Term 3: January – March  
Term 4: April – June

## School fee range

Rp7,000,000 to 21,000,000 per term

## Email

info@mightymindspreschool.com

## Website

www.mightymindspreschool.com

## Entry requirements

Age requirements according to class level  
Birth certificate and enrolment form

## Curriculum

Welcome to Mighty Minds – it’s more than a school, it’s a community.

Within our walls you will not only find a warm inviting environment and rigorous academic curriculum, but also a place where you are truly known. You will find a supportive, vibrant learning environment where teachers go the extra mile and parents gather in school to connect. You will also find a balanced place where each student’s unique needs and learning styles are met, and where confidence, critical thinking and emotional intelligence are as important as intellectual success. Because we believe that happy learners are the best learners.

Children learn through asking probing questions, building positive habits, and participating in stimulating, interactive experiences that flow from a multifaceted curriculum, outdoor exploration, and active play. Led by teachers who encourage collaboration, classroom communities are supportive and dynamic, an atmosphere that is challenging and stimulating for children’s minds where they are respected as unique and distinct individuals.





SCAVENGER HUNT ON NATURE FIELD TRIP\*



\*SCIENTIA SQUARE PARK  
(FOR NURSERY AND KINDER STUDENTS)

# Curious Kids' NATURE ADVENTURE

04 - 08 JUNE 2018

Roll out your sleeves and choose your best twigs, as we delve into nature and all the treasure it holds.

We'll create our name plates in pebbles and flowers, create recycled paper and build nature cove.

Under the sun and with friends in our hands, we'll fill our nature book with treasures of earth as we join the scavenger hunt in a surprise nature trip.

NATURAL BRUSH PAINTING



BUILDING A TERRARIUM



FLOWER CROWN MAKING



MAKING RECYCLED PAPER



Class	Fee (IDR)	Age Group	Time
Toddler	1,200,000	18 - 24 months	08.00 - 10.00 10.20 - 12.20
Nursery	1,500,000	2 - 4 years old	09.00 - 12.00
Kindergarten	1,500,000	4 - 6 years old	09.00 - 12.00

\*One time Registration Fee IDR 300,000 for non Mighty Minds students

Our Centres are located at:

Jl. Hang Tuah Raya No. 19 & 35  
+6221 7279 7075

Jl. Hos Cokroaminoto No. 50  
+6221 3190 9199

Jl. Pejaten Barat Raya No 15  
+6221 719 2332



[mightymindspreschool.com](http://mightymindspreschool.com)



[info@mightymindspreschool.com](mailto:info@mightymindspreschool.com)



[@mightymindspreschool](https://www.instagram.com/mightymindspreschool)



# NATIONALHIGH JAKARTA SCHOOL



## NATIONALHIGH JAKARTA SCHOOL

Jl. Pos Pengumben 41, Joglo  
West Jakarta  
Tel: +62-21 5890 2962

### Principal

Mr Ang Hwee Khoon

### Head of Admissions

Ms Ermien Noerwulandari

### Age group

Primary: 6 – 11  
Secondary: 12 – 15  
Junior College: 16 – 17

### Average number of pupils per class

20 – 25

### School terms

1<sup>st</sup> Term: July – September  
2<sup>nd</sup> Term: October – December  
3<sup>rd</sup> Term: January – March  
4<sup>th</sup> Term: April – June

### School fee range

Please contact our Admission  
Officer for further details

### Benchmarking Examinations

Year 6 : iPSLE  
Year 10: Cambridge IGCSE  
Year 12: Cambridge 'A' Level

### Email

contactus@nh.piagetacademy.org

### Website

www.nationalhighjakartaschool.com

NationalHigh Jakarta School (NHJS), began receiving students in 2002, and offers 12 years of seamless Primary, Secondary and Junior College education. NHJS is the pioneer of the group of 'P.I.A.G.E.T' schools in Indonesia.

The P.I.A.G.E.T Schools come under the direction and supervision of P.I.A.G.E.T Academy. P.I.A.G.E.T Academy started in 2001 as an international school in Singapore adopting the Singapore education system and its examinations. Today P.I.A.G.E.T Academy has transformed into an organisation that has developed its own unique brand of education – P.I.A.G.E.T Education – blending the best of both the east and the west.

School facilities include soccer stadium, swimming pool (25 x 13m), indoor sports hall (basketball court, futsal, badminton, hockey, etc) auditorium, Learning Resource Centre (LRC), computer lab, well equipped science lab, GEMS room, health centre, WiFi, students' lounge, multi-media equipped classrooms, music studio, art & craft studio and food studio.

**CURRICULUM:** The P.I.A.G.E.T Schools are the only schools in Indonesia conferred as a Partner School of the Singapore Examinations and Assessment Board (SEAB). The 12-year P.I.A.G.E.T Education Journey scaffolds the development of the child in three areas – Education of the heart, Education of the mind and Education for life skills. The variety of exciting academic and character building programmes support the realisation of every child's potential to excel and attain good results and sound character.

**ENRICHMENT PROGRAMMES:** Various extra-curricular activities, Immersion Programmes, Project Work, Pastoral Care & Moral Education, and 21<sup>st</sup> Century Skills Programmes (Life skills, Leadership Course and Thinking Communication-Presentation Skills).

**Core Values: Passion, Integrity, Adaptability,  
Grace, Excellence, Teamwork (P.I.A.G.E.T)**  
**Vision: Creating a better world through education.**





**NATIONALHIGH**  
JAKARTA SCHOOL

**Primary · Secondary · Junior College**

Jl Pos Pengumben 41 Jakarta Barat t. 62 21 5890 2962

[www.nationalhighjakartaschool.com](http://www.nationalhighjakartaschool.com)

[f](#) NationalHigh Jakarta School [@nationalhighjakartaschool](#)



***Creating a better  
world through  
education***

NHJS grows every child by  
**Training their minds  
Shaping their hearts  
Applying their hands**

# NIS JAKARTA

## A NORD ANGLIA EDUCATION SCHOOL



**NIS**  
A NORD ANGLIA  
EDUCATION SCHOOL

Jalan NIS I  
Kenanga Terusan  
Ampera Raya – Cilandak  
Jakarta 12560  
Tel: +62-21 782 3930

### Principal

Niki Meehan

### Head of Admissions

Yolla Pramitha

### Age group

Early Years (1.5 to 5)  
Primary Years (6 to 12)

### Average number of pupils per class

Early Years: 18  
Primary Years: 22

### School terms

Term 1: 13 August 2018 to  
14 December 2018  
Term 2: 7 January 2019 to  
18 April 2019  
Term 3: 6 May 2019 to 28 June 2019

### School fee range

Rp42,250,000 – 240,480,000  
(2017/2018 School Fees)

### Facebook

NIS Jakarta

### Instagram

@nisjakarta

### Email

admissions@nis.or.id

### Website

www.nis.or.id

### Entry Requirements

Admissions throughout the school year. Conditional on all educational and admission requirements being met. NIS is a non-selective school, however, any specific learning issues will be discussed with parents prior to any formal application being made or accepted.

### Curriculum

NIS Jakarta is the first Nord Anglia Education School in Indonesia, offering a dynamic international education to young learners aged 18 months to 12 years. Our welcoming atmosphere and leafy green campus provide a haven for our truly international community in the heart of the city. Our internationally recognised curricula not only provide a strong academic core but also support the development of young people who are curious, knowledgeable, compassionate and motivated to succeed. We recruit only the best international teachers to make every day impactful for our students. We are ambitious for every child and personalise learning to ensure that every child is nurtured to flourish. Your child and whole family will love being part of our learning community.





**NIS**

A NORD ANGLIA  
EDUCATION SCHOOL

# World-class learning in Jakarta

As part of the Nord Anglia  
family, there's no limit  
to what your child can achieve



**NORD  
ANGLIA**  
EDUCATION

+62 (0)21 782 3930  
[admissions@nis.or.id](mailto:admissions@nis.or.id)  
[www.nis.or.id](http://www.nis.or.id)

# PLAY DOUGH PRESCHOOL



Puri Casablanca Residences,  
Tower Cattleya, Level B1,  
Jl. Puri Casablanca No.1,  
Menteng Dalam 12870, Jakarta  
Tel: +62-21 8379 9687 / 8379 9688  
WhatsApp: +62-822 8888 9687

### Principal

Mrs Lusiana Makmun Murod

### Head of Admissions

Mr Andrew Tobing

### Age group

1.5 – 6

### Average number of pupils per class

15 (1:7 student to teacher ratio)

### School terms

Four terms (August to May)  
Summer Session (June to July)

### School fee range

Rp2,000,000 – 4,000,000 per month

### Instagram

@playdoughpreschool

### Twitter

@playdoughindo

### Email

admin@playdoughpreschool.com

### Website

www.playdoughpreschool.com

### Entry Requirements

Minimum age of 18 months.

Play Dough Preschool is an international standard preschool, conducted in full English using an Active-Learning approach, for children aged 1.5 to 6 years of age; where children's interests are at the core of their learning activities. We believe children learn best when they are interested and excited about what they are doing, have hands on experience with materials and toys, and encounter real-life problems whilst solving them using their own knowledge and skills.

Our facilities include large classrooms filled with toys and learning materials, hygienically clean bathrooms in each classroom, large outdoor playgrounds with cushioned flooring, and a swimming pool for our Water Fun activities.

We offer a two-day, three-day and regular five-day programme. Please visit our office for a full list of school fees.

For a two-day free trial, please contact us today to find the best available dates.



## GLOBAL INTERNSHIP FOR YOUR INTERNATIONAL CAREER

"I've always wanted to pursue a career in science. Fortunately, i3L offers an established Biomedical Medicine program to prepare me for employment in the research industry.

The advanced laboratory facilities and well-rounded lecturers and faculty, enable learning to be conducted efficiently.

Furthermore, i3L's partnerships with renowned international and national research institutes and organizations have opened up many internship opportunities for us, the students, to increase our job experiences.

i3L is definitely going to be one of the most renowned institutes in Asia for their dedication in Life Science research and their contribution to the society."

Daniel Abidin | BioMedicine  
Alumni of Ping Yi Secondary School, Singapore



### SCHOOL OF LIFE SCIENCES



Bioinformatics



FoodScience



BioMedicine



FoodTechnology



BioTechnology



Pharmacy

### SCHOOL OF BUSINESS



Bio  
Entrepreneurship



Master in  
BioManagement

SCHOLARSHIP  
AVAILABLE

### OUR PARTNERS



# AN INTERNATIONAL SCHOOL WITH A BALINESE SPIRIT

Every year, for 24 hours, the airport on the busy tourist island of Bali is closed. This is the day that the Balinese people celebrate their New Year, known as Nyepi. This is the day of silence. No traffic, no music, no TV, no lights....no school! Even the mosques respect this day and their minarets are silent. The day before Nyepi is another matter: it is a day of noise, parades, music and monsters. Huge statues called Ogoh-ogoh are paraded through every village, accompanied by hundreds of people and loud music. The Ogoh-ogoh monsters symbolise the evil spirits surrounding us and they are paraded around and ultimately set on fire to rid these evil spirits from our lives.

At Canggü Community School (CCS), every class in the Primary School collaborates with the school gardeners to make an Ogoh-ogoh class for their very own monster parade. This is one of the annual traditions of the school. This project takes place over several weeks before the parade. Students learn about the symbolism of the Ogoh-ogoh: that they should represent demons, bad spirits and negative influences on our natural environment. This year, students in Year 2 decided to make an Ogoh-ogoh inspired by the work of Balinese Trash Artist, Made Bayak. Made uses plastic trash to create beautiful works of art, in response to the well-documented plastic problem here in Bali. Instead of painting their Ogoh-ogoh,



the Year 2 students decided to create a collage from plastic waste. The finished piece is an Ogoh-ogoh carrying a bag with the slogan "Say NO to plastic." The statue has certainly represented humanity's negative influences on our beautiful natural environment.

On the day before Nyepi, parents, students and staff gather in the school car park to watch the procession. The huge statues are paraded around the car park by the students themselves, while dressed in traditional Balinese clothing. The gamelan orchestra accompanies the parade. Each year gamelan musicians from the local community come to the school to work with the Year 5 classes. They work with the school music department to run workshops so the students can learn the traditional accompanying music. Like the Ogoh-ogoh parades that happen around Bali later that evening, the parade is a chaotic, noisy and colourful affair. Contrary to customs, the school Ogoh-ogoh are not burnt, but now have pride of place around the school, on display for about a year in the school grounds.

This annual school event is one example of how schools in Bali celebrate the island's traditions, rich culture and talented people. When you walk into CCS, for example, you can see how the school buildings include traditional Indonesian architecture and there are four Balinese temples on the campus. These temples are used for various ceremonies throughout the year, most notably for the celebration of Saraswati, the Goddess of books and learning. All staff, students and parents, regardless of religion, are invited to the ceremonies.



These unique Balinese religious practices do not just happen on special occasions. There are offerings made to the spirits daily. Decorative baskets with food, flowers and even sometimes a cigarette are placed in strategic positions around the school. CCS is a non-smoking campus, apart from our ancestral visitors!

Students in schools such as CCS come from dozens of nations around the world, and they are fortunate to live in and go to school on this wonderful island and be immersed in its magical culture. These unique ceremonies and daily rituals contribute to the student's education and enrich the lives of the whole community.

---

*CCS is an International SPK School in Bali, Indonesia with about 450 students from Preschool to Year 13. CCS teaches the English National Curriculum, but adapts the content to include local and global perspectives. CCS is authorised to teach the Cambridge IGCSE and IB Diploma programmes for Senior High School. The school is fully accredited by the Council of International Schools and the Western Association of Schools and Colleges.*

*Beccy Fox, Head of School, Canggu Community School*

# RAFFLES CHRISTIAN SCHOOL



## RAFFLES CHRISTIAN SCHOOL

To Learn, To Lead, To Love

### Pondok Indah Campus I

Jl. Gedung Hijau Raya I No. 1  
Pondok Indah, Jakarta Selatan 12310  
Tel: +62-21 7590 3342  
Fax: +62-21 7590 3414

### Pondok Indah Campus 2

Arteri Pondok Indah No.1  
Jl. Sultan Iskandar Muda RT9/RW11,  
Kebayoran Lama, Jakarta 12240  
Tel: +62-21 722 6047  
Fax: +62-21 7590 3414

### Kelapa Gading Campus

Jl. Gading Pelangi No. 1  
Kelapa Gading, Jakarta Utara 14240  
Tel: +62-21 4587 4222 / 2961 6178  
Fax: +62-21 4587 4225

### Kebon Jeruk Campus

Jl. Meruya Ilir No. 89,  
Meruya Utara, Jakarta Barat 11620  
Tel: +62-21 586 7548/49

### Levels

Pre-Primary (N1, N2, K1 and K2)  
Primary (1 to 6)  
Secondary (1 to 4)  
Junior College (1 to 2)  
GAC (1 year)

### E-mail

[admission@raffles-international.org](mailto:admission@raffles-international.org)

### Website

[www.raffles-international.org](http://www.raffles-international.org)

Raffles Christian School is a Certified Cambridge Centre for International Examinations (CIE), offering an international curriculum aligned to the Cambridge Primary Checkpoint, Cambridge Secondary Checkpoint, IGCSE and International AS and A Level examinations. Raffles Christian School also offers the Global Assessment Certificate (GAC) which guarantees entry into a worldwide range of universities.

Anchored by a highly dedicated, passionate and caring teaching faculty with sound pedagogical practices, Raffles Christian School provides a rich and challenging learning environment, building a strong academic foundation and opening the doors to opportunities for future success.

The wide range of CCAs and programmes that we offer aims to provide our students with opportunities to develop lifelong interests, broaden their experience and prepare them to face the challenges of the 21<sup>st</sup> century. We value and understand our students' unique personalities, and seek to develop their character through our pastoral system to equip them socially and emotionally to embrace the challenges awaiting them after high school.

### Entry Requirements

Placement test and interview





**RAFFLES CHRISTIAN SCHOOL**  
To Learn, To Lead, To Love

Nurturing your child to be  
a life-long learners with sterling character

**OPEN FOR ENROLLMENT**

**Pre-primary - Primary - Secondary - Junior College**

[admission@raffles-international.com](mailto:admission@raffles-international.com)

 **Cambridge Assessment  
International Education**

Cambridge International School

**PONDOK INDAH CAMPUS 1**  
Jl. Gedung Hijau Raya 1 No.1  
Pondok Indah, Jakarta Selatan  
Tel: +62 21 7590 3342  
Fax: +62 21 7590 3414

**PONDOK INDAH CAMPUS 2**  
Arteri Pondok Indah No.1  
Jl. Sultan Iskandar Muda  
RT9/RW11, Kebayoran Lama  
Jakarta 12240  
Tel: +62 21 722 6047  
Fax: +62 21 7590 3414

**KELAPA GADING CAMPUS**  
Jl. Gading Pelangi No.1  
Kelapa Gading, Jakarta Utara  
Tel: +62 21 4587 4222  
Fax: +62 21 4587 4225

**KEBUN JERUK CAMPUS**  
Jl. Meruya Ilir No.89  
Meruya Utara, Jakarta Barat  
Tel: +62 21 586 7548/49

# SAMPOERNA ACADEMY



## JAKARTA CAMPUS

### L'Avenue

Jl. Raya Pasar Minggu  
Pancoran, South Jakarta  
Tel: +62-21 5022 2234/+62-813 3000 3002

### BSD Campus

Jl. Raya Serpong BSD  
CBD Lot II-2, South Tangerang

### The Icon Business Park

Jl. Raya Cisauk, BSD City, Tangerang  
Tel: +62-21 5055 6247/+62-811 9530 032

### Sentul Campus

Sentul City, Cijayanti, Babakan Madang  
Bogor, West Java  
Tel: +62-21 5022 2234/+62-811 9530 031

## MEDAN CAMPUSES

### Main Campus

Kompleks Citra Garden, Jl. Jamin Ginting

### Pre-School Campuses

Cipto ELC  
Jl. Dr. Cipto No. 6, Medan Polonia  
Sun Plaza, Second Floor  
Jln. K. H. Zainul Arifin No. 7  
Madras Hulu, Medan Polonia  
Tel: +62-811 6363 331

## Director

Dr. Mustafa Guvercin

## Age group

Playgroup: 2 – 3  
Preschool: 3 – 4  
Kindergarten 1: 4 – 5  
Kindergarten 2: 5 – 6  
Elementary: 6 – 12  
Middle School: 12 – 15  
High School: 15 – 18

## Average number of pupils per class

Playgroup to Pre-K: 18  
Kindergarten to Primary: 24  
Middle School to High School: 24

## School terms

Begins in July and concludes in June of the following year with a three-week break for New Year.

## School fee range

Please contact the school's admissions

## Email

info@sampoernaacademy.sch.id

## Website

www.sampoernaacademy.sch.id

## Entry Requirements

Placement test & interview

## Curriculum

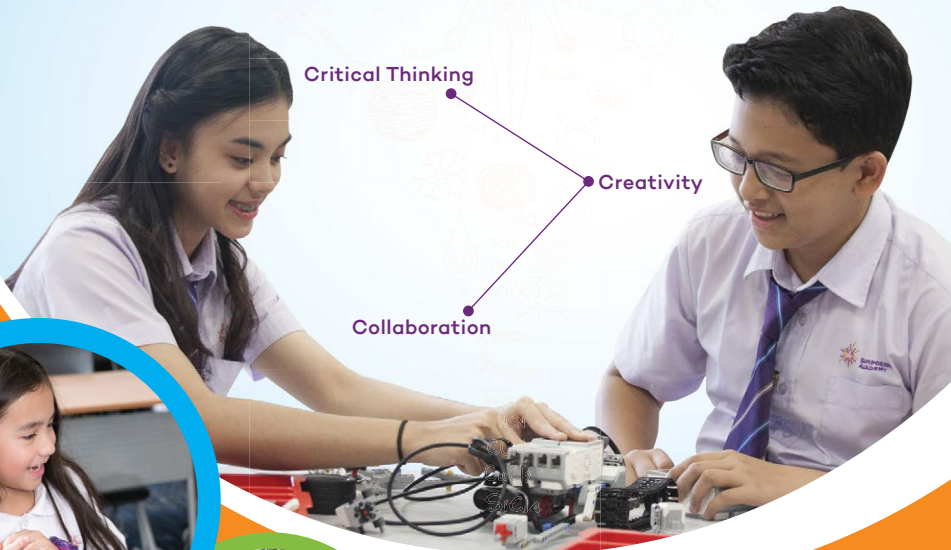
Sampoerna Academy is an authorised Cambridge Assessment International Education and follows Cambridge curriculum Grade 1-12. Furthermore, the academy enriches the content with STEAM and Project-Based Learning approaches. The academy's curriculum also abides by government regulations to offer Bahasa Indonesia, civics, and religion classes.

The adaptation of STEAM Education and Project-Based Learning complements the rigorous curriculum in Sampoerna Academy, empowering students to explore their interests. This is conducive to the development of creativity, communication, problem-solving, digital citizenship, and other important life and career skills.

The academy offers English as the primary language of instruction, with supplementary classes in Chinese and Bahasa Indonesia. As a result, graduates will be competent in these three languages and well-equipped to seize the opportunities that come their way in the future.



# A **STEAM** Focused Education for Our Children's Success



Critical Thinking

Creativity

Collaboration



Top in the World Award  
Mandarin Chinese  
Marvelyn | Grade 10



STEAM\* School with Cambridge curriculum and experienced teachers



Effective use of technology in class



Project-Based Learning provides a solid foundation for more advanced concepts



Instructions in English, with strong Mandarin lessons and Bahasa Indonesia



Safe and secure learning environment

*\*STEAM is an educational approach that encompasses Science, Technology, Engineering, Arts, and Math.*

**ENROLL NOW**

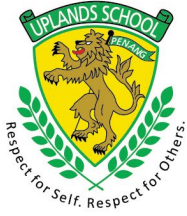
**(021) 50 2222 34 or  
0813 3000 3002**



**SAMPOERNA  
ACADEMY**

@ sampoerna.academy | Sampoerna Academy

sampoernaacademy.sch.id



# The International School of Penang (Uplands)

ESTABLISHED 1955

THE I.S.P. SCHOOLS ASSOCIATION (No. 2597 - V)

## CURRICULUM:

- IB Primary Years Programme
- IB Diploma Programme
- IGCSE

THE INTERNATIONAL SCHOOL OF PENANG (UPLANDS)

Uplands School is one of the leading international schools in Malaysia, where the promise of quality education is realised within a multicultural learning environment. The School aims to foster a learning environment that further nurtures all-rounded individuals, enriching students to realise their full potential.

Accreditations & Memberships:



*Respect for Self. Respect for Others.*



# The International School of Penang (Uplands)

ESTABLISHED 1955

THE I.S.P. SCHOOLS ASSOCIATION (No. 2597 - V)

A homely, studios environment in the calm of the Batu Feringgi valley



# BOARDING AT UPLANDS

Caring

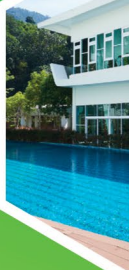
Safe

Modern

Independent

Experienced

Diverse



**Contact:**  
Mrs Jacalynne Peake (Head of Boarding)  
✉ [boarding@uplands.org](mailto:boarding@uplands.org)

A Member of:



# SEKOLAH GLOBAL SEVILLA



## Global Sevilla Puri Indah

Jl. Kembangan Raya  
Blok. JJ No. 1, Puri Indah  
Kembangan Selatan  
West Jakarta 11610

## Global Sevilla Pulo Mas

Jl. Pulo Mas Jaya  
Pacuan Kuda Pulo Mas  
East Jakarta 13210

## Age group

1.5 – 18

## Average number of pupils per class

Toddler: 8

Nursery: 10

KG 1: 16

KG 2: 18

KG 3: 20

Primary – Secondary: 24

## Number of students

1,000

## School terms

July – June

## Email

[student.admission@globalsevilla.org](mailto:student.admission@globalsevilla.org)

## Website

[www.globalsevilla.org](http://www.globalsevilla.org)

Global Sevilla was founded in October 2002 by a team of visionaries who had a deep insight to build two schools in the East as well as in West Jakarta. Sprawling on the strong foundation of love, Global Sevilla is deeply embedded with noble values of nurturing global students with character. We believe that some day these young citizens carrying the symbol of peace and harmony will be the epitome of love and compassion impacting the world in their own special way.

By integrating mindfulness, which is certainly the need of the hour in a challenging and unpredictable world, this dream is now coming to fruition.

Global Sevilla adopts the Cambridge curriculum through K-12. It has also incorporated the International Early years, as well as the International Primary Curriculum to add more rigour, so as to ignite and sustain lifelong curiosity and love of learning.

In the Secondary School, we offer IGCSE and A Level examinations as well as Foundation programme in Commerce. As an SPK (Satuan Pendidikan Kerjasama) school, we also prepare the Indonesian students to sit for the national examinations.

Through this, Global Sevilla is committed to raising children to think out of the box, grooming them to become problem solvers and resilient future leaders of integrity as well as agents of change.





**GLOBAL SEVILLA**

Nurturing Global Students with Character



# HOME OF MINDFULNESS

**Toddler**  
**Nursery**  
**Kindergarten**  
**Primary**  
**Secondary**

Authorised by:



Exclusive Partnership:



**Global Sevilla Puri Indah**

Jl. Kembangan Raya Blok. JJ No. 1, Puri Indah,  
Kembangan Selatan - Jakarta Barat 11610  
Phone: (021) 580 6699

**Global Sevilla Pulo Mas**

Jl. Pulo Mas Jaya, Pacuan Kuda Pulo Mas  
Jakarta Timur 13210  
Phone: (021) 4788 2288

# SEKOLAH PELITA HARAPAN



## **SPH Lippo Village**

2500 Bulevar Palembang Raya,  
Lippo Village, Tangerang 15811  
Tel: +62-21 546 0233 / 0234  
Email: sph-lv@sph.ac.id

## **SPH Sentul City**

Jl. Babakan Madang,  
Sentul City, Bogor 16810  
Tel: +62-21 8796 0234  
Email: sph-sc@sph.ac.id

## **SPH Lippo Cikarang**

Jl. Dago Permai No.1 Komp. Dago Villas  
Lippo Cikarang, Bekasi 17550  
+62-21 897 2786 / 2787  
Email: sph-lc@sph.ac.id

## **SPH Kemang Village**

Jl. Pangeran Antasari 36,  
South Jakarta 12150  
Tel: +62-21 2905 6789  
Email: sph-kv@sph.ac.id

## **SPH Pluit Village**

Pluit Village Mall, 4<sup>th</sup> Floor,  
Jl. Pluit Indah Raya, North Jakarta 14450  
Tel: +62-21 6667 0315  
Email: sph-pv@sph.ac.id

## **Academic Advisor**

Mr Phillip Nash

## **Head of Admissions**

Mrs Elizabeth Santosa

## **Age group**

Early Childhood: 1 to 3  
Kindergarten: 3 to 6  
Junior School: 6 to 12  
Senior School: 12 to 18

## **Average number of pupils per class**

Early Childhood: 10 to 12  
Kindergarten: 18 to 24  
Junior School: 24  
Senior School: 24

## **School terms**

1<sup>st</sup> Semester: July to December  
2<sup>nd</sup> Semester: January to June

## **School fee range**

Rp28,600,000 – 297,200,000

## **Website**

[www.sph.edu](http://www.sph.edu)

## **Entry Requirements**

Student admissions test and interview/observation

## **Curriculum**

For over 25 years, Sekolah Pelita Harapan (SPH) has offered high quality and holistic Christian education for Indonesia. With total enrolment of 2,200 students across five schools around Jakarta. SPH exists to prepare students to become tomorrow's leaders and world citizens.

SPH schools are accredited through the Western Association of Schools and Colleges (WASC), the Association of Christian Schools International (ACSI) and member of the Council of International Schools (CIS)

Our schools emphasise Indonesian identity and culture as well as the importance of living as a global citizen. The comprehensive academic, art, sport, music, science, biblical foundation and community service programmes are designed to produce high quality graduating students. All our graduates pursue higher education in well-respected universities around the world.

SPH teachers are recruited both locally and internationally. All teachers are well qualified and willing to engage in continuous professional development. SPH also has excellent international standard facilities to support creative teaching and effective learning. Above all, our SPH community always stays true to our vision of True Knowledge, Faith in Christ and Godly Character in everything we do.



CELEBRATING

25  
YEARS

OF LEGACY  
IN EDUCATION



Beyond the traditional education, preparing future generations with **HOLISTIC CHRISTIAN EDUCATION**, enabling students to grow spiritually, intellectually, emotionally, physically and socially.

Open Enrollment! Call Our Admissions Office Today.

+62 21 546 0234



**SPH**.edu



CAMBRIDGE  
International Examinations  
Cambridge International School



ACSIS  
STRONGER TOGETHER



CIS  
MEMBER



Christian  
Schools  
International

TRUE KNOWLEDGE FAITH IN CHRIST GODLY CHARACTER

📍 Lippo Village | 📍 Sentul City | 📍 Lippo Cikarang | 📍 Kemang Village | 📍 Pluit Village

# SEKOLAH PERKUMPULAN MANDIRI



## Sekolah Perkumpulan Mandiri

Jln. DR.GSSY Ratulangi No.5 & 14,  
Menteng, Central Jakarta 10310  
Tel: +62-21 392 4384  
WhatsApp: +62 816 169 0005

### Principal

Mrs Diah Samsiati Rajasa  
(Kindergarten & Primary)  
Mr Ari Ardianto (Junior & Senior  
High School)

### Head of Admissions

Mr Glenn Thompson

### Age group

Kindergarten (4 to 6)  
Primary (6 to 12)  
High School (12 to 18)

### Average number of pupils per class

Kindergarten (17 to 25)  
Primary (15 to 25)  
High School (6 to 18)

### School terms

1<sup>st</sup> Semester (July to December)  
2<sup>nd</sup> Semester (January to June)

### School fee range

Available upon request

### Email

admin@spm.sch.id

### Website

www.spm.sch.id

### Entry Requirements

- Trial, observation and interview with parent  
(Kindergarten 1 to Primary 3)
- Entrance test, observation and interview with parent  
(Primary 4 to Senior High Grade 12)

### Curriculum

National curriculum 2013 and Cambridge IGCSE (primary to  
junior high grade 7 to 10)

National curriculum 2013 and GAC (senior high grade 11 and  
grade 12)

Welcome to Sekolah Perkumpulan Mandiri (SPM). We are an “A” accredited National School with an international perspective. Established in 1995, we are the first school in Indonesia that adopted the “Seven Habits for Highly Successful People” in addition we are the First “The Leader in Me” Lighthouse School outside of North America. We hold a 100 percent graduation record, and due to our university preparation practices, SPM Alumni continue to the top national and international universities.

We are located in the heart of Menteng, Central Jakarta. Placing lifelong learning first, our dedicated and highly experienced teaching team engages students in holistic, student-centred learning. Classrooms are spacious and comfortable (maximum 25 students per class) with two homeroom teachers (in kindergarten and primary). Our students unleash their potential through the Seven Habits, an integrated curriculum, real-life experiences, quality tools, an engaged community and our international standards.

Free trial and entrance tests for all grades. Scholarship opportunities available.





**Sekolah  
Perkumpulan  
Mandiri**

- ✔ Government Accredited "A"
- ✔ 1st Leader in Me School in Indonesia
- ✔ 7 Habits Pioneering School
- ✔ Developing Critical Thinking
- ✔ Building Skills, Knowledge & Understanding
- ✔ National, Cambridge & GAC Curricula
- ✔ 100% Graduation Record
- ✔ Internationally Accepted IGCSE
- ✔ IGCSE Acceleration Program
- ✔ GAC Global Recognition
- ✔ University Pathway
- ✔ University Preparation
- ✔ University Credits
- ✔ International Opportunities
- ✔ Scholarships



## Our Curriculum

SPM applies the National, Cambridge and GAC Curriculum, using effective teaching and learning strategies that blend the curriculums. 70% of our graduates continue their studies abroad, while 30% continue their studies at top national Indonesian universities.



## The Leader in Me

SPM is an International Lighthouse School, applying the Leader in Me model based on The Steven Covey 7 Habits of Highly Effective People to unleash your child's potential.

JI DR GSSY Ratulangi No. 5 & 14  
Menteng, Jakarta 10310  
Tel: (021) 392-4384  
Whatsapp: 0816-1690-005  
[admin@spm.sch.id](mailto:admin@spm.sch.id)  
[www.spm.sch.id](http://www.spm.sch.id)



For more information,  
please contact Us.



# SINARMAS WORLD ACADEMY



*Embracing the Future  
Embracing Asia*

Jl. TM Pahlawan Seribu CBD Lot XV  
BSD City, Tangerang 15322  
Tel: +62-21 5316 1400  
Fax: +62-21 5316 1401  
WhatsApp: +62-877 8413 0489

## Principal

Ms Kelly Hon  
(Early Years & Elementary School)  
Mr Nigel Robson  
(Middle & High School)

## Age group

Early Years: 2 – 6  
Elementary: 6 – 11  
Middle School: 11 – 14  
High School: 14 – 18

## Average number of pupils per class

18 – 26 (varies per class)

## School terms

1<sup>st</sup> Term: July – September  
2<sup>nd</sup> Term: October – December  
3<sup>rd</sup> Term: January – March  
4<sup>th</sup> Term: April – June

## School fee range

Please contact Admissions Office for further details

## Email

admissions@swa-jkt.com

## Website

www.swa-jkt.com

## Curriculum

SINARMAS WORLD ACADEMY (SWA) provides an international education experience from Nursery to Grade 12, with a goal to achieve academic excellence. SWA opened in July 2008 and the first cohort of Grade 12 students graduated in June 2012. SWA prepares each student for a lifetime of academic success through the development of adaptable 21<sup>st</sup> century approaches to learning.

SWA is offering an engaging Early Years Foundation Stage (EYFS) curriculum from the UK that develops students physically, intellectually, emotionally and socially. Starting from Kindergarten 2 to Grade 5, SWA incorporates the Cambridge Curriculum with a framework that promotes an enquiry-based approach to learning. SWA has built exclusive partnership and exchange programmes with Peking University Elementary School and other institutions in Korea and Japan.

In Grades 6 to 10, SWA integrates content from the Cambridge Assessment International Education (CAIE) subjects within the International Baccalaureate Middle Years Programme (IB MYP) curriculum framework, according to national requirements and to the school's Asian cultural identity.

In order to better prepare students for their intended career pathways and with their IB Diploma Programme (DP) course selections, SWA has developed a Business, Engineering, Science & Technology (BEST) 'streaming' programme starting in Grade 9. SWA has pioneered the BEST pathways to enable students to study subjects that suit their interests and long-term career goals. The IB DP itself is a two-year pre-university course of studies leading to examinations which allows its graduates to fulfil the requirements of various national and international education systems. It truly prepares students for success in higher education and to be active participants in a global society. SWA students are accepted into top universities in many different countries around the world, including: the United States, the United Kingdom, Hong Kong, Canada, Singapore, Australia, Ireland, The Netherlands, Germany, Korea, Taiwan, China, Switzerland, and Japan.





Embracing the Future  
Embracing Asia

# BUILDING THE FOUNDATION FOR LIFELONG LEARNING



## Open Enrolment Academic Year 2018/19

REGISTER NOW! Limited Seats Available

Go to [www.swa-jkt.com](http://www.swa-jkt.com) or call (021) 5316 1400

Authorised by:



Cambridge Assessment  
International Education  
Cambridge International School

Exclusive Partnership:



Member of:



A sister school of:



EARLY YEARS • ELEMENTARY • MIDDLE SCHOOL • HIGH SCHOOL

# SINGAPORE INTERCULTURAL SCHOOL (SIS BV)



**Bona Vista**

Singapore Intercultural School

Jl. Bona Vista Raya, Lebak Bulus,  
South Jakarta 12440  
Tel: +62-21 7591 4414

## Chief of Operations

Oliver Anderson

## Age group

Pre-School (2 to 6)  
Primary (6 to 12)  
Secondary (up to 16)  
Junior College / IB (up to 18)

## Average number of pupils per class

Pre-School (10 to 14)  
Primary (16 to 24)  
Secondary (20 to 24)  
Junior College / IB (20 to 24)

## School terms

### 1<sup>st</sup> Intake (January to December)

#### Play Club – Junior College 2

1<sup>st</sup> Term (January to March)  
2<sup>nd</sup> Term (April to June)  
3<sup>rd</sup> Term (July to September)  
4<sup>th</sup> Term (October to December)

### 2<sup>nd</sup> Intake (July – June)

#### Primary – Secondary

1<sup>st</sup> Term (July to September)  
2<sup>nd</sup> Term (October to December)  
3<sup>rd</sup> Term (January to March)  
4<sup>th</sup> Term (April to June)

## School fee range

Rp51.5 to 250 million

## Email

sisbonavista@sisschools.org

## Website

www.sisschools.org



## Entry Requirements

1. A completed enrolment checklist (including the last two years academic transcript)
2. Placement interview by the head teacher or deputy head teacher

## Curriculum

Singapore Intercultural School (SIS) Bona Vista, is the flagship school of SIS Group of Schools. SIS first opened its doors in 2002 and now has an enrolment of over 250 students for the 2017/18 academic year (Pre-School through Junior College) representing 25 nations. SIS models itself after top schools in Singapore. Recent worldwide assessments placed Singapore at the top of global rankings, effectively rating Singapore's education system as the "best in the world".

SIS uses an inquiry-based programme. In pre-school and primary, students follow the Singapore curriculum and focus on the foundation of mathematics, science and English amidst a well-balanced aesthetic and sports programme. Secondary School students follow the Cambridge curriculum, and Junior college students take the internationally recognised International Baccalaureate (IB) diploma. Students work to be fluent in languages such as Mandarin, French and Bahasa Indonesia, and important life and work skills are stressed through our PACE initiative: Perseverance, Analytical Thinking, Collaboration/Communication and Entrepreneurism.

At SIS, the faculty is passionate about its philosophy of "Inspired Learning for Inspired Futures" and the future can only become brighter if access to all the best universities/colleges is made available by a progressive school. It is this inherent passion that motivated SIS to implement two annual academic intakes, the first such initiative by a school in this part of the world.



# The World's Best Education System is in Singapore Schools

Singapore outperforms the rest of the world in the OECD 2015 PISA survey and TIMSS rankings 2015.

## Why SIS?

- 📖 Combining Singapore Curriculum with Cambridge International Examinations & International Baccalaureate
- 📖 Low Student to Teacher ratio
- 📖 School population of less than 500 students
- 📖 A family environment that prioritizes learners
- 📖 Diverse student body with 20 nationalities



+62 21 759 14414  
[sisbonavista@sisschools.org](mailto:sisbonavista@sisschools.org)

## Inspired Learning for Inspired Futures



Singapore Curriculum



Cambridge Assessment International Education  
Cambridge International School



Jl. Bona Vista Raya Lebak Bulus Jakarta 12440 Indonesia

Jakarta: Bona Vista - Kelapa Gading - Kebon Jeruk - Pantai Indah Kapuk  
Cilegon • Medan • Palembang • Semarang

[sisschools.org](http://sisschools.org)



Bona Vista

Singapore Intercultural School

# SINGAPORE NATIONAL ACADEMY



## Main Campus

Raya Pepelegi Pondok Maspion IV  
Blok GH No. 1-6, Waru,  
Sidoarjo 61256

Tel: +62-31 853 1920

Fax: +62-31 853 1923

## West Campus

Telaga Utama Blok D1 No. 31-32  
Bukit Golf Citraraya, Surabaya 60219

Tel: +62-31 741 9694

Fax: +62-31 741 6289

## Academic Advisor

Mr Peter Araman

## Head of Admissions

Ms Melania Octavianti

## Age group

ELC (Playgroup to Kindergarten)

Primary (Y1 to Y6)

High School (Y7 to Y12)

## Average numbers of pupils per class

ELC: max. 20

Primary: max. 30

High School: max. 30

## School fee range

Rp65 to 210 million (AY 2018 - 2019)

## School terms

1<sup>st</sup> Term: July to September

2<sup>nd</sup> Term: September to December

3<sup>rd</sup> Term: January to March

4<sup>th</sup> Term: April to June

## Email

info@sna.piagetacademy.org

## Website

www.sna.sch.id

## Entry Requirements

Applicants can take an entry test to assess their academic standing and abilities in English language, Math and Science. If a year group is full, applicants may ask to be placed on a waiting list.

## Curriculum

Montessori, Singapore Curriculum & Cambridge Programme.

Singapore National Academy school is a premier world-class school that offers quality Pre K to Year 12 seamless education that uses the English Language as its first medium of instruction, and Chinese Language and Bahasa Indonesia as second and third languages respectively.

Learning in SNA expands beyond the classroom walls. Students are encouraged to embrace technology from a very young age. Students are inspired to enquire and imagine through our activity-based lessons and experimental real-world learning technique. Students are trained and equipped with essential skills such as leadership, teamwork, communication and self-direction as SNA is committed to provide world class education to prepare every child for tomorrow's world.



*Beyond  
Academic  
Excellence*



# SINGAPORE SCHOOL, PANTAI INDAH KAPUK



## SINGAPORE SCHOOL, PANTAI INDAH KAPUK

Jl. Mandara Indah 4, Pantai Indah  
Kapuk, Jakarta 14460, Indonesia  
Tel: +62-21 588 3835

**Age group**  
2 – 18

**Principal**  
Jen Olmsted M Ed. B Ec.

**Instagram**  
sispik

**Email**  
admission@sis-pik.com

**Website**  
www.sis-pik.com

**Average number of pupils  
per class**  
15 – 24 (A total population of  
Over 700 students)

**School term**  
July – June

**School fees range**  
Available upon request

### Entry Requirements

Student admissions test and interview. We are looking for students who are creative, passionate and inquisitive about the world.

### Curriculum

We offer an excellent educational experience, weaving together the best of three educational traditions: Singapore, Cambridge, and the IB. A profound respect for education and a rigorous approach to learning are foundation stones of our curriculum. We offer our students a unique opportunity – an outstanding curriculum delivered by a first-rate, committed faculty. Our primary is rooted in the rigour of the Singapore curriculum.

Using an innovative curriculum that encourages students to investigate and explore, It is no surprise that the Singapore curriculum leads the world in many international league tables. We are very proud to offer the IGCSE in secondary school. The IGCSE is an internationally recognised externally examined course offered by Cambridge. In our junior college we are proud to offer the IB Diploma programme.

We have a rich after school programme offering a diverse selection of activities, from artistic pursuits such as ballet to more academic activities like debate. We are very proud of our strong student leadership programme. SISPIK is a school where students want to contribute to create a better and stronger school.

We are a caring community, and it is always a pleasure to walk into a school where you will be welcomed by smiling and enthusiastic students.





# SINGAPORE SCHOOL, PANTAI INDAH KAPUK



**2-5**  
YEAR OLDS

PRE-SCHOOL

SINGAPORE  
MOE  
FRAMEWORK

**6-11**  
YEAR OLDS

PRIMARY

SINGAPORE  
CURRICULUM

**17-18**  
YEAR OLDS

JUNIOR  
COLLEGE

IB DIPLOMA  
PROGRAMME



International  
Baccalaureate

**12-16**  
YEAR OLDS

SECONDARY

CAMBRIDGE



Our Map

Building a strong foundation  
for lifelong learning from  
early childhood years.

Visit Us for More Information:

Jl. Mandara Indah 4, Pantai Indah Kapuk, Jakarta 14460, Indonesia



sispik

Singapore School,  
Pantai Indah Kapuk



admission@sis-pik.com  
www.sis-pik.com



(021) 588 3835

(021) 588 3836

# SPRINGFIELD SCHOOL



## **Permata Buana Campuses, West Jakarta**

### **PB1 (Toddler – P3)**

Jl. Pulau Sebaru L4/1

T: +62-21 5835 7830

### **PB2 (P4 – G8)**

Jl. Pulau Selayar B1/1

T: +62-21 5830 4383

### **PB3 (G9-G12)**

Jl. Pulau Tidung

T: +62-21 5835 2448

## **Raffles Hills Campus – Cibubur (Toddler – G12)**

Jl. Alternatif Cibubur

T: +62-21 844 7939

## **Age group**

Toddler: 1.5 – 2

Nursery: 2 – 4

Kindergarten: 4 – 6

Primary: 6 – 12

Secondary: 12 – 16

Junior College: 16 – 18

## **Average number of pupils per class**

16 to 25

## **School fee range**

Please contact our school admissions for further details

## **Email**

pr@springfield.sch.id

## **Website**

www.springfield.sch.id

## **Entry Requirements**

Free Trial/Test.

Open house every day. Monday to Friday, 8 am to 3 pm.

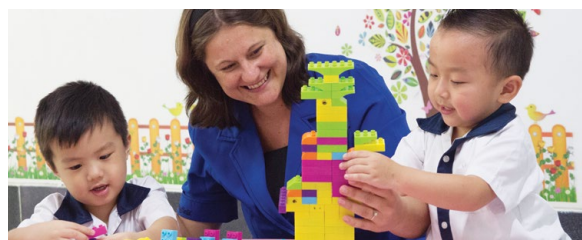
## **Curriculum**

Springfield School is an English-speaking school with the highest of international standards. Established in 1997, Springfield has four campuses located in Permata Buana, West Jakarta and Raffles Hills, Cibubur. Providing education from Toddlers – Grade 12 students, Springfield offers a Christian, caring and positive learning environment where our students are empowered with the skills and knowledge to be successful global leaders.

Springfield employs quality expatriate and local teachers and maintains exceptional academic standards. Each year many students achieve exceptional scores in their Cambridge Primary & Secondary Checkpoint, IGCSE and A Level examinations.

Springfield has an outstanding Chinese language and culture programme. Springfield students are prepared for the international HSK Mandarin standards.

Springfield is accredited by the Cambridge International Centre, Western Association of Schools and Colleges (WASC) and Badan Akreditasi Nasional - S/M and is a member of Association of Christian Schools International (ACSI).





• HOLISTIC AMERICAN CURRICULUM •

# OPEN ENROLLMENT

Preschool • Pre K - Kindergarten  
Lower School • Middle School • High School

**For further information, please contact :**

Jl. Boulevard Bukit Gading Raya, Jakarta Utara 14240

Mobile Phone : +62 21 4586 5222

Fax : +62 21 4586 5232

Whatsapp : +62 811 927 8887

Email : [marketing@njis.org](mailto:marketing@njis.org)

[www.njis.org](http://www.njis.org)

 NJIS Jakarta  [njisjakarta](https://www.instagram.com/njisjakarta)  [@njisjakarta](https://www.twitter.com/njisjakarta)



# TUTOR TIME



Jl. Sultan Iskandar Muda No. 1,  
South Jakarta 12240  
Tel: +62-21 7279 8185 / 7279 8223  
Other Centres: Jakarta (Kemang,  
Kelapa Gading, Pluit, Kebon Jeruk  
Intercon), Bandung, Surabaya

### Principal

Ms Margie Teillers

### Head of Admissions

Ms Margie Teillers

### Age groups

Mini Me (6–18 months)  
Toddler (1–2 years old)  
Twos (2–3 years old)  
Preschool (3–4 years old)  
Pre-Kindergarten (4–5 years old)  
Kindergarten (5–6 years old)

### Average number of pupils per class

Small class size with good teacher-child ratio

### School terms

1<sup>st</sup> term: July to September  
2<sup>nd</sup> term: October to December  
3<sup>rd</sup> term: December to February  
4<sup>th</sup> term: March to May  
Summer 3 weeks

### School fee range

From Rp3 million per term

### Email

info@tutortime.co.id

### Website

www.tutortime.co.id

### Entry Requirements

Parent interview with School Management

### Curriculum

Developed by Tutor Time USA early childhood education specialists based on Howard Gardner's Multiple Intelligence.

Tutor Time is an early childhood education centre since 1996, applying programmes developed by Tutor Time USA.

In Tutor Time we believe that children learn more in their early years of life than at any other time. That's why our early childhood education specialists developed unique programmes that encourage children to discover their own strengths, develop self-confidence, learn to respect others and their uniqueness, and to become more active, inquisitive and creative problem-solvers.

With more than 21 years of experience in Indonesia, we nurture every aspect of a child's development and guide them in self-development.

We believe that children are smart in many different ways and that they learn by actively engaging in hands-on meaningful experiences which build on their skills in communication, critical thinking, creativity and collaboration. At the same time we guide them to enjoy learning, and build healthy habits in early life.





# Join us!

## AND MAKE THIS YOUR HAPPY PLACE!

Tutor Time has been a leading Early Childhood Education Center in Indonesia for more than 21 years. Our curriculum is created by early childhood education specialists in the USA, meeting each child's developmental needs from 6 months to 6 years old.



JAKARTA: Kemang, Ph: 7179 3139 • Pondok Indah, Ph: 7279 8185 • Kelapa Gading, Ph: 4587 7312, 4584 2795 • Pluit, Ph: 669 2513 • Intercon, Ph: 586 8544 • Gading Serpong, Ph: 2222 2235

• BANDUNG: (022) 250 0031 • SURABAYA: (031) 731 6736 • WORLDWIDE : Hong Kong, USA.

[www.tutortime.co.id](http://www.tutortime.co.id), [info@tutortime.co.id](mailto:info@tutortime.co.id)



# Wonder of Learning

---

Children are active participants in their own development, reflecting the intrinsic human drive to explore and master one's environment. Our Early Years program, immerses children in an atmosphere of wonder, care, exploration, and growth, and it isn't long until their love of learning grows from the inside out.

Learning in Indonesia  
to be best *for* the world

[www.jjsedu.or.id](http://www.jjsedu.or.id)

 JIS Jakarta Intercultural School  Jakarta Intercultural School  
 @JISofficial  Jakarta Intercultural School

 **JIS**  
Jakarta Intercultural School

# Education Directory List

## JAKARTA

### ACS Jakarta

Jl. Bantar Jati, Kelurahan Setu,  
Jakarta Timur 103880  
T: +62-21 8459 7175  
E: info@acsjakarta.sch.id  
W: www.acsjakarta.sch.id

### ACG School Jakarta

Jl. Warung Jati Barat No.19,  
Pasar Minggu, Jakarta Selatan 12510  
T: +62-21 780 5636  
E: acgjkt@acgedu.com  
W: www.acgedu.com

### ACT Education Solutions

2<sup>nd</sup> Floor, Unit 2D-1,  
The Boulevard No.5,  
Jl. H. Fachrudin, Jakarta Pusat 10250  
T: +62-21 3199 1451  
E: jakartaoffice@  
acteducationsolutions.com

### AIS Indonesia

Jl. Kemang Timur No. 81,  
Jakarta Selatan 2730  
T: +62-21 7179 2949  
Jl. Pejaten Barat No. 69,  
South Jakarta 12510  
T: +62-21 782 1141  
E: admissions@ais-indonesia.com  
W: www.ais-indonesia.com

### Beacon Academy Jakarta

Jl. Pegangsaan Dua No. 66, Kelapa  
Gading, Jakarta Utara 14250  
T: +62-21 460 3480  
E: marketing@  
beaconacademy.net  
W: www.beaconacademy.net

### BINUS School, Simprug

Jl. Sultan Iskandar Muda Kav. G-8  
Simprug, Jakarta Selatan  
T: +62-21 724 3663 ext. 4120-4122  
E: admissions@binus.edu  
W: simprug.binus.sch.id

### Chiltern House Preschool

Jl. Simpruk Garden VIII No. 1  
(Jl. Kramat I RT 01 RW 02),  
Jakarta Selatan 12220  
T: +62-21 2912 6071  
E: enquiries@juliagabriel.id  
W: www.juliagabriel.id/ch

### Discovery Center

Jl. Haji Abdul Majid Dalam  
No. 28, Cipete, Jakarta Selatan  
T: +62-21 765 7040  
E: abcshang@rad.net.id  
W: www.discoverycenter.co.id

### Global Sevilla

Puri Indah Campus  
Jl. Kembangan Raya Blok JJ No.1,  
Puri Indah, Jakarta Barat  
T: +62-21 580 6699  
F: +62-21 582 8690  
Pulomas Campus  
Jl. Pulo Mas Jaya, Pacuan Kuda  
Pulo Mas, Jakarta Timur 13210  
T: +62-21 4788 2288

### GMIS Jakarta

Jl. H.B.R. Motik, Blok D6,  
Kav No. 1, Kota Baru Bandar  
Kemayoran, Jakarta Pusat 10630  
T: +62-21 65865667-8-9  
E: headmaster@gandhijkt.org  
W: www.gandhijkt.org

### Hansol Kids Preschool

Jl. Pangeran Antasari No. 19  
Jakarta 12410  
T: +62-21 765 6588  
+62-21 7179 4788  
+62-21 7179 4787

### Heritage International School

The Bellezza Permata Hijau Arcade  
3<sup>rd</sup> floor, Arteri Permata Hijau 34  
Jakarta Selatan 12210  
T: +62-21 5366 4888  
E: info@heritage.sch.id  
W: www.heritage.sch.id

### Integrated Children's Academy

Jl. Pakubuwono VI No. 6,  
Jakarta Selatan 12120  
T: +62-21 726 0664  
E: info@ica-school.com  
W: www.ica-school.com

### Ichthus School

South Campus  
Jl. Caringin Barat No. 1, Cilandak  
Barat, Jakarta Selatan 12430  
T: +62-21 7590 8820  
West Campus  
Jl. Surya Mandala II Blok N,  
No. 11, Sunrise Garden,  
Jakarta Barat 11520

T: +62-21 581 2228  
E: ichthus\_sij@cbn.net.id  
W: www.ichthusschool.com

### Jakarta Intercultural School

Jl. Terogong Raya No.33,  
Cilandak, Jakarta Selatan 12430  
T: +62-21 769 2555 ext. 16566  
E: admissions@jisedu.or.id  
W: www.jisedu.or.id

### Jakarta Montessori School

Jl. Durian No. 10 Jagakarsa,  
Jakarta Selatan 12620  
T: +62-21 727 2162  
E: admin@jakartamontessori.com  
W: www.jakartamontessori.com

### Jakarta World Academy

CHUBB Square Building,  
8<sup>th</sup> Floor Thamrin Nine Podium,  
Jl. MH Thamrin 10, Jakarta Pusat  
T: +62-21 2993 7234  
E: admissions@jwa-jkt.com  
W: www.jwa-jkt.com

### Jayakarta Montessori School

Jl. Kemang Selatan I Blok L-1,  
Kemang, Jakarta Selatan 12730  
T: +62-21 719 4907 / 719 4908  
E: admin@jktmontessori.com  
W: www.jktmontessori.com

### JAC School

Jl. Pegangsaan Dua No. 75A,  
Kelapa Gading, Jakarta Utara 14250  
T: +62-851 002 422 30  
E: info@jacschool.com  
W: www.jacschool.com

### Jakarta International Korean School

Jl. Bina Marga No. 24, Ceger,  
Jakarta Timur 13820  
T: +62-21 8444 95861  
E: jiks@jiks.com  
W: www.jiks.com

### Kinderfield-Highfield School

Tebet:  
Jl. Prof. Dr. Soepomo No.11A,  
Jakarta Selatan 12810  
T: +62-21 830 3209 / 9828 4968  
Cinere:  
Jl. Cinere Raya No. 216,  
Cinere, Jakarta Selatan  
T: +62-21 754 5190 / 750 1168

### Simprug:

Jl. Pos Pengumben Lama No. 13,  
Simprug, Jakarta Barat  
T: +62-21 5890 1100 / 5890 1200

### Sudirman Park:

Sudirman Park Apartement  
Connecting Tower Amarilis (A)  
& Bougenville (B) Lt. 1AB  
No. 0106-0107 Jl. KH. Mas Mansyur  
Kav. 35, Jakarta Pusat  
T: +62-21 5794 2782

### Sunter:

Jl. Bisma Raya Blok A No. 57,  
Sunter, Jakarta Utara  
T: +62-21 6530 5120 / 6530 5170  
E: marketing@kinderfield.sch.id  
W: www.kinderfield.sch.id  
www.highfield.sch.id

### **Kinderland Pre-School**

#### Pondok Indah:

Jl. Caringin Barat No. 1,  
Cilandak Barat, Jakarta Selatan 12430  
T: +62-21 7590 8818  
E: kinderlandjk@cbn.net.id

#### Sunrise:

Jl. Surya Timur Blok A No. 5,  
Komplek Surya Gardenia,  
Jakarta Barat 11520  
T: +62-21 580 2323/ 580 1647  
E: kinderlandjk@cbn.net.id

#### Bonavista:

Jl. Bonavista Raya, Bona Indah  
Housing Komplek, Lebak Bulus,  
Jakarta Selatan 12440  
T: +62-21 769 2988/ 769 1655  
E: kinderlandjk@cbn.net.id

#### Muara Karang:

Jl. Muara Karang Blok Y 3 - Timur  
No. 12, Jakarta Utara 14450  
T: +62-21 660 2966/ 669 1328  
E: kinderlandjk@cbn.net.id

#### Pakubowono:

Jl. Pakubowono VI No. 1  
(Jl. Ophir No. 1), Kebayoran Baru,  
Jakarta Selatan 12120  
T: +62-21 725 0320 / 725 0402  
E: kinderlandjk@cbn.net.id

#### Pulomas:

Jl. Kayu Putih Raya Blok A IV Kav.  
1-4, Pulo Mas, Jakarta Timur 13260  
T: +62-21 470 6722 / 475 7285  
E: inquiry@kinderlandindonesia.com  
W: www.kinderlandindonesia.com

### **Lycee Francais Louis-Charles Damais**

Jl. Cipete Dalam No. 32,  
Jakarta Selatan 12410  
T: +62-21 750 3062  
E: sekretariatdir@lfjakarta.org  
W: www.lfjakarta.org

### **Mentari School Cipete**

Jl. H. Jian No. 6, Cipete Utara,  
Kebayoran Baru, Jakarta Selatan 12150  
T: +62-21 725 5413 / 722 2546  
E: misjeadmin@msi.sch.id  
W: www.msi.sch.id

### **Mighty Minds**

#### Hang Tuah:

(Centre 1- Infant to N1)  
Jl. Hang Tuah Raya No. 35,  
Jakarta Selatan 12120  
T: +62-21 7279 7718

#### Centre 2 (N2 to K2)

Jl. Hang Tuah Raya No. 19,  
Jakarta Selatan 12120  
T: +62-21 7251 810

#### Menteng:

Jl. HOS Cokroaminoto No. 50,  
Menteng, Jakarta Pusat 10350  
T: +62-21 3158 558  
E: info@mightymindspreeschool.com  
W: www.mightymindpreeschool.com

### **Modern Montessori International**

Level 7 Unit B717, EPIWALK  
Komp. Rasuna Epicentrum,  
Jl. HR Rasuna Said, Jakarta Selatan 12940  
T: +62-21 2991 2274  
E: enquiry@mmi-indonesia.com  
W: www.mmi-indonesia.com

### **NIS – A Nord Anglia Education School**

Jl. NIS I Kenanga Terusan Ampera  
Raya, Cilandak, Jakarta Selatan 12560  
T: +62-21 782 3930  
W: www.nis.or.id

### **National High Jakarta School**

Jl. Raya Pos Pengumben 41,  
Kebon Jeruk, Jakarta Barat  
T: +62-21 5890 2962  
E: marketing@nh.piagetacademy.org  
W: www.nh.piagetacademy.org

### **New Zealand Independent School**

Jl. Kemang Selatan I#1A, Kemang,  
Jakarta Selatan 12730  
T: +62-21 718 3222  
E: frontdesksup@nzis.school.nz  
W: www.nzis.school.nz

### **North Jakarta Intercultural School**

Jl. Boulevard Bukit Gading Raya,  
RT. 15/RV. 3, Klp. Gading Bar.,  
Klp. Gading, Jakarta Utara 14240  
T: +62-21 4586 5222  
E: suggestions@njis.org  
W: www.njis.org

### **Play Dough Preschool**

Puri Casablanca Apartments  
Jl. Puri Casablanca no. 1,  
Jakarta Selatan 12870  
T: +62-21 8379 9687  
E: admin@playdoughpreschool.com  
W: www.playdoughpreschool.com

### **Raffles Christian School**

#### Pondok Indah Campus 1:

Jl. Gedung Hijau Raya I No. 1,  
Pondok Indah, Jakarta Selatan  
T: +62-21 759 03342

#### Pondok Indah Campus 2:

Jl. Arteri Pondok Indah No. 1,  
Pondok Indah, Jakarta Selatan  
T: +62-21 7226047

#### Kelapa Gading Campus:

Jl. Gading Pelangi No. 1,  
Kelapa Gading, Jakarta Utara  
T: +62-21 584 4222

#### Kebon Jeruk Campus:

Jl. Meruya Ilir No. 89,  
Meruya Utara, Jakarta Barat 11620  
T: +62-21 586 7548 / 49  
E: admission@raffles-international.org  
W: www.raffles-international.org

### **Sampoerna Academy**

L'Avenue Campus  
Jln. Raya Pasar Minggu, Kav. 16  
Pancoran, Jakarta 12780  
T: +62-21 5022 2234  
M: +62-813 3000 3002

### **Sekolah Lentera Indonesia**

Jl. Sultan Iskandar Muda No. 98,  
Arteri Pondok Indah,  
Jakarta Selatan 12240  
T: +62-21 729 1777  
E: admin@slie-educ.org  
W: www.slie-educ.org

### **Sekolah Pelita Harapan**

#### Kemang Village:

Jl. Pangeran Antasari 36,  
Jakarta Selatan 12150  
T: +62-21 2905 6789  
E: sph-kv@sph.ac.id

#### Pluit Village:

Pluit Village Mall, Jl. Pluit Indah Raya,  
Jakarta Utara 14450  
T: +62-21 6667 0315  
E: sph-pv@sph.ac.id  
W: www.sph.edu

### **Sekolah Perkumpulan Mandiri**

Jl. DR GSSY Ratulangi No. 5 & 14  
Menteng, Jakarta 10310  
T: +62-21 3924384  
M: +62-816 1690 005  
E: admin@spm.sch.id

## **Singapore School**

### Bona Vista:

Jl. Bonavista Raya, Lebak Bulus,  
Jakarta Selatan 12440  
T: +62-21 7591 4414  
E: info@sisschools.org  
W: www.sisschools.org

### Pantai Indah Kapuk:

Jl. Mandara Indah 4, Pantai Indah  
Kapuk, Jakarta Utara 14460  
T: +62-21 588 3835  
E: admission@sis-pik.com  
W: www.sis-pik.com

### Kelapa Gading:

Jl. Pegangsaan Dua no.83,  
Jakarta Utara 14250  
T: +62-21 460 7306  
W: www.sis-kg.com

## **Springfield School**

Jl. Alternative Cibubur  
Raffles Hills, Jakarta Timur 16954  
T: +62-21 844 7938 / 39  
E: pr@springfield.sch.id  
W: www.springfield.sch.id

### PBI Campus

Jl. Pulau Sebaru Block L4 No.1,  
Taman Permata Buana,  
Jakarta Barat 11610  
T: +62-21 5835 7830  
E: pr@springfield.sch.id

### PB2 Campus

Jl. Pulau Selayar I Block I No.1,  
Taman Permata Buana,  
Jakarta Barat 11610  
T: +62-21 5830 4383  
E: +62 21 5830 4286

E: pr@springfield.sch.id

### PB3 Campus

Jl. Pulau Tidung, Taman Permata  
Buana, Jakarta Barat 11610  
T: +62-21 5835 2448  
E: pr@springfield.sch.id

## **Tutor Time**

### Tutor Time Intercon

Perumahan Taman Kebon Jeruk  
Intercon Blok C2 / 19, Jakarta Barat  
T: +62-21 586 8544  
M: +62-813 1780 0495

### Tutor Time Serpong

Ruko Paramount Neo Arcade  
Jl CBD Gading Serpong Barat C  
01-02  
T: +62-21 2222 2235  
M: +62-812 8993 8009

### Tutor Time Bukit

Komp. Ruko Gading Bukit Indah Blok  
O No15-16, Jakarta Utara  
T: +62-21 4584 2795

### Tutor Time Kirana

Gading Kirana Utara Blok E10/28,  
Jakarta Utara  
T: +62-21 4587 7313  
+62-21 4587 7312

## **BOGOR**

### **Al Taqwa College Australia (Sentul Campus)**

Hambalang Village  
Citeureup, Sentul  
T: +62-815 1174 2494  
+62-851 0178 0816

E: contact@al-taqwa.sch.id  
W: www.al-taqwa.sch.id

### **The Intercommunity School of Bogor**

Jl. Papandayan no.7, Bogor 16151  
T: +62-251 823 4360  
W: www.ibo.org

### **Sampoerna Academy**

Sentul Alaya, Sentul City  
M: +62 811 9530 031

### **Sekolah Bogor Raya**

Perumahan Danau Bogor Raya,  
Bogor 16143  
T: +62-251 837 8873  
E: admissions@sekolahbogorraya.com  
W: www.sekolahbogorraya.com

### **Sekolah Pelita Harapan, Sentul City**

Jl. Babakan Madang,  
Sentul City, Bogor 16810  
T: +62-21 8796 0234  
E: sph-sc@sph.ac.id  
W: www.sph.edu

## **TANGERANG**

### **BINUS School, Serpong**

Jl. Lengkong Karya–Jelupang No.58  
Serpong, Tangerang Selatan  
T: +62-21 536 96961 / 538 0400  
E: serpong-admissions@binus.edu  
W: serpong.binus.sch.id

### **British School Jakarta**

Bintaro Sektor 9,  
Jl. Raya Jombang-Ciledug,  
Pondok Aren, Tangerang Selatan  
T: +62-21 745 1670  
E: admissions@bsj.sch.id  
W: www.bsj.sch.id

### **Deutsche Schule Jakarta**

Jl. Puspawidya No 8, BSD  
Tangerang Selatan 15322  
T: +62-21 537 8080

E: mail@dsjakarta.de  
W: www.dsjakarta.de

### **Global Jaya School**

Emerald Boulevard Bintaro Jaya  
Sektor IX , Tangerang Selatan 15224  
T: +62-21 745 7562  
E: inquiries@globaljaya.com  
W: www.globaljaya.com

### **Jakarta Japanese School**

Jl.Titihan Raya,Bintaro Jaya  
Sektor 9 Parigi-Pondok Aren,  
Tangerang Selatan 15227  
T: +62-21 745 4130  
E: info@jjs.or.id  
W: www.jjs.or.id

### **Jakarta Multicultural School**

Jl. Pisangan Raya No 99,  
Cirendeu, Ciputat Timur  
Tangerang Selatan 15419  
T: +62-21 744 4864  
E: admissions@jimsch.org  
W: www.jimsch.org

### **Kinderfield-Highfield, BSD**

BSD Junction, Floor P2 Block R1  
Jl. Pahlawan Seribu, BSD City,  
Tangerang Selatan  
T: +62-21 531 662067 / 531 62068  
E: marketing@kinderfield.sch.id  
W: www.kinderfield.sch.id  
www.highfield.sch.id

### **Mentari School Bintaro**

Jl. Perigi Baru No. 7A  
Pondok Aren, Bintaro,  
Tangerang Selatan 15228  
T: +62-21 745 8418  
E: bintaro@mis.sch.id  
W: www.mis.sch.id

### **Sampoerna Academy**

BSD Icon, The Icon Business Park  
Jl. Raya Cisauk, BSD City, Tangerang  
T: +62-21 5022 2234  
M: +62-811 953 0032  
*BSD New Campus (open in 2018)*  
Jln. Raya Serpong BSD CBD Lot  
II-2 Lengkong Gudang, Serpong  
Tangerang Selatan  
T: +62-21 5022 2234  
M: +62-811 953 0032

### **Sekolah Pelita Harapan, Lippo Village**

2500 Bulevar Palem Raya,  
Lippo Village, Tangerang 15811  
T: +62-21 546 0234  
E: sph-lv@sph.ac.id  
W: www.sph.edu

## **Sinarmas World Academy**

Jl. TM Pahlawan Seribu,  
CBD Lot XV BSD City,  
Tangerang Selatan 15322  
T: +62-21 5316 1400  
E: admissions@swa-jkt.com  
W: www.swa-jkt.com

## **BEKASI**

### **Sekolah Pelita Harapan, Cikarang**

Jl. Dago Permai No. 1,  
Komplek Dago Villas,  
Lippo Cikarang, Bekasi 17750  
T: +62-21 897 2786 / 87  
E: sph-ic@sph.ac.id  
W: www.sph.edu

### **BINUS School, Bekasi**

Jl. Saraswati No. 1,  
Bumiwedari, Bekasi  
T: +62-21 8261 7799  
E: bekasi-admissions@binus.edu  
W: bekasi.binus.sch.id

### **Kinderfield School, Bekasi**

Jl. Alamanda Blok H7 No.5-6,  
Rawalumbu, Bekasi  
T: +62-21 8210 489  
E: marketing@kinderfield.sch.id  
W: www.kinderfield.sch.id

## **BANDUNG**

### **Bandung Alliance Intercultural School (BAIS)**

Jl. Bujanggamanik Kav.2, Kota Baru  
Parahyangan Bandung 40553  
T: +62-828 190 9000  
E: info@baisedu.org  
W: www.baisedu.org

### **Bandung Independent School**

Jl. Surya Sumantri No. 61,  
Bandung 40164  
T: +62-22 201 4995  
E: bisadmin@bisedu.or.id  
W: www.bisedu.or.id

### **Rama School**

Kembang Kuning, Ubrug, Jatiluhur  
P.O. Box 60, Purwakarta 41101  
T: +62-264 207 052  
E: principal@ramaschool.com  
W: www.ramaschool.com

### **Stamford School**

Allegro Altura Complex,  
Jl. Citra Green, Dago  
Bandung 40142

T: +62-22 251 5255  
E: info@stamford.sch.id  
W: www.stamford.sch.id

### **Temasek International School**

Jl. Sindang Sirna no.8, Bandung 40153  
T: +62-22 203 1381  
E: info@temasekintl.org  
W: www.temasekintl.org

### **Tutor Time**

Jl. Dipati Ukur No 7, Bandung  
T: +62-22 250 0031

## **SEMARANG**

### **GMIS Semarang**

Jl. Setiabudi 77, Banyumanik,  
Semarang 50263  
T: +62-24 747 2633  
E: principal@gmissemarang.org  
W: www.gmissemarang.org

### **Semarang Multinational School**

Jl. Jangli Raya 37, Candisari,  
Semarang 50254  
T: +62-24 831 1994  
E: info@semarangis.or.id  
W: www.semarangis.or.id

### **Permata Bangsa International**

Jl. Gombel Lama (Golf Road),  
Semarang 50261  
T: +62-24 745 8258  
E: adm\_spb@yahoo.com  
W: www.permatabangsa.com

## **YOGYAKARTA**

### **Yogyakarta Independent School**

Jl. Cendrawasih No. 1, Sinduadi,  
Mlati, Sleman, Yogyakarta 55284  
T: +62-274 625 965  
E: info@yis-edu.org  
W: www.yis-edu.org

### **Jogjakarta Community School**

Jl Kaliurang KM10.9, Ngaglik, Sleman,  
Yogyakarta  
T: +62-274 883 849  
E: jogjakartacommunityschool  
@gmail.com  
W: www.jogjacommunityschool.org

### **Olifant School**

Jl. Cendrawasih 4A-B,  
Demangan Baru, Yogyakarta  
T: +62-274 557 303  
E: olifant@olifantschool.com  
W: www.olifantschool.com

## **SURABAYA**

### **Surabaya Intercultural School**

Citra Raya, Lakarsantri, Tromol  
Pos 2 / SBDK, Surabaya 60225  
T: +62-31 741 4300  
E: sisadmin@sis.sch.id  
W: www.sis.sch.id

### **Sekolah Ciputra Surabaya**

Puri Widya Kencana Citraland,  
Surabaya 60213  
T: +62-31 741 5018  
E: school@sekolahciputra.sch.id  
W: www.sekolahciputra.sch.id

### **Singapore National Academy**

Jl. Raya Pepelegi, Pondok Maspion IV  
Block G-H 1-6, Surabaya  
T: +62-31 853 1923  
E: info@snaedu.org  
W: www.sna.sch.id

### **Sophomore International School**

Jl. Raya Darmo Permai II/17,  
Surabaya 60228  
T: +62-31 731 4047  
E: admin@spinschool.net  
W: www.spinschool.net

### **Surabaya European School**

Pakuwon Golf & Family Club,  
Villa Bukit Regensi, Pakuwon Indah,  
Surabaya 60123  
T: +62-31 739 1751  
E: info@surabayaeuropeanschool.com  
W: www.surabayaeuropeanschool.com

### **Tutor Time**

Jl Raya Darmo Permai II  
No. 20, Surabaya  
T: +62-31 731 6736  
M: +62-819 3850 0978

## **MEDAN**

### **Sampoerna Academy**

Sun Plaza, Jl. K.H. Zainul Arifin No.7  
Madras Hulu, Medan Polonia  
T: +62-61 455 0606  
M: +62-811 606 6611  
Citra  
Jln. Jamin Ginting,  
Kompleks Citra Garden, Medan  
T: +62-61 821 1957  
M: +62-811 606 6611  
Cipto  
Jln. Dr. Cipto No. 6 Medan Polonia  
T: +62-61 455 0606  
M: +62-811 6066 611

## BALI

### AIS Indonesia

Jl. Kerobokan Raya No. 44,  
Banjar Taman, Kuta, Bali 80361  
T: +62-361 734 936  
E: admissions@ais-indonesia.com  
W: www.ais-indonesia.com

### Asian International School

West Block, Complex Perumahan,  
Puri Gading, Jimbaran, Bali 80361  
T: +62-361 704 030/ 705 122  
E: info@aisb.sch.id  
W: www.aisb.sch.id

### Bali Island School

Jl. Danau Buyan IV No. 15,  
Sanur, Bali 80228  
T: +62-361 288 770  
E: admissions@baliis.net  
W: www.baliinternationalschool.com

### Canggu Community School

Jl. Subak Sari, Banjar Tegal  
Gundul, Canggu, Bali 80361  
T: +62-361 844 6391  
E: admissions@ccsbali.com  
W: www.ccsbali.com

### Dyatmika School

Jalan Pucuk, Banjar Tangtu, Kesiman  
Kertalangu, Denpasar 80035  
T: +62-361 461 874  
E: info@dyatmika.org  
W: www.dyatmika.org

### GMIS Bali

Jl. Tukad Penet No.8A, Renon,  
Denpasar, Bali 80235  
T: +62-361 239 748  
E: manager@gandhibali.org  
W: www.gandhibali.org

### Green School

Jl. Raya Sibang Kaja, Banjar Saren,  
Abiansemal, Bali 80352  
T: +62-85 100 093 310  
E: info@greencampbali.com  
W: www.greencampbali.com

### Lycée Français de Bali

Jl. Umalas Kauh No. 76,  
Kerobokan, Bali 80117  
T: +62-361 473 2314  
E: administration@lfbali.com  
W: www.lfbali.com

### Sanur Independent School

Jl. Tukad Nyali, Gg. SMU 6 No. 3,  
Denpasar 80227

T: +62-361 284 410  
E: info@balischool.com  
W: www.balischool.com

## KALIMANTAN

### AIS Indonesia

Batakan Housing Complex (BHC)  
Jl. Mulawarman no. 20 A  
Balikpapan, Kalimantan Timur  
E: admissions@ais-indonesia.com  
W: www.ais-indonesia.com

### Kinderfield School, Pontianak

Jl. Aris Margono No.9, (Soeprapto  
IV), Pontianak, Kalimantan Barat  
T: +62-561 586 332  
E: marketing@kinderfield.sch.id  
W: www.kinderfield.sch.id

## INTERNATIONAL UNIVERSITY

### BINUS University International

The Joseph Wibowo Center,  
Hang Lekir I No. 6, Senayan,  
Jakarta 10270  
T: +62-21 720 2222 / 3333 Ext. 3145  
W: www.international.binus.ac.id

### Deakin College

Grand Slipi Tower, 5<sup>th</sup> floor  
Jl. S. Parman Kav. 22–24,  
Jakarta 11480  
T: +62-21 2902 2285  
E: info@deakincollege.or.id  
W: www.deakincollege.edu.au/  
locations/jakarta

### Indonesia International Institute fo Life Sciences (i3L)

Jl. Pulomas Barat Kav 88,  
Jakarta Timur 13210  
T: +62-21 2956 7899  
E: admission@i3l.ac.id  
W: www.i3l.ac.id

### LaSalle College Jakarta

Sahid Office Boutique Unit D–F  
(Komp. Hotel Sahid Jaya)  
Jl. Jend. Sudirman Kav. 86  
T: +62-21 5785 1819  
E: infojkt@lasallecollege.ac.id  
W: www.lasallecollege.ac.id

### International University Liaison Indonesia (IULI)

Eco Campus, The Breeze, BSD  
Grand Boulevard, BSD City  
T: +62-21 5058 8000  
E: info@iuli.ac.id  
W: www.iuli.ac.id

## Raffles Indonesia

Citywalk Sudirman 6<sup>th</sup> floor  
Jl. K.H. Mas Mansyur No.121,  
Jakarta 10220  
T: +62-21 2555 6738  
E: jakarta@rafflesindonesia.com  
W: www.raffles-indonesia.com

### Swiss German University

EduTown BSDCity, Kav. II. I,  
Tangerang Selatan, Banten  
T: +62-21 3045 0045  
E: marketing@sgu.ac.id  
W: www.sgu.ac.id

### International Women University

Jl. Ahmad Yani No. 18–20,  
Bandung 40112  
T: +62-22 730 7707  
E: info@iwu.ac.id  
W: www.iwu.ac.id

### LaSalle College Surabaya

Jl. Imam Bonjol No. 126,  
Surabaya 60264  
T: +62-31 562 5000  
E: infosby@lasallecollege.ac.id  
W: www.lasallecollege.ac.id

### Stenden University Bali

Jl. Kubu Gunung, Banjar Tegal Jaya,  
Dalung, Kuta Utara, Bali 80361  
T: +62-361 412 970  
E: stendenbali@stenden.com  
W: www.stendenuniversitybali.com

## AMUSEMENT/ GAMES

### Bricks 4 Kidz

Jl. Benda Raya No. 5, Kemang,  
Jakarta Selatan 12560  
T: +62-21 780 2766  
E: info.kemang@bricks4kidz.com  
W: www.bricks4kidz.co.id

### Engineering For Kids Indonesia

Jl. Bulevar Timur Raya Blok ND-I  
No. 30, Kelapa Gading 14250,  
Jakarta Utara  
T: +62-21 24562/ 0462  
E: indonesia@  
engineeringforkids.com  
W: www.engineeringforkids.com



**BAIS**  
Bandung Alliance  
Intercultural School

Innovative | Faith Based | American Curriculum  
Located in Kota Baru Parahyangan

[baisedu.org](http://baisedu.org)

# Raffles

INDONESIA

## Success by *Design*

INTAKES : JAN/APR/JUL/OCT



### DESIGN

Fashion Design  
Interior Design  
Digital Media Design  
Visual Communication Design

### BUSINESS

Business Management  
Business Tourism & Hospitality

### MERCHANDISING

Fashion Marketing & Management

[www.Raffles-Indonesia.com](http://www.Raffles-Indonesia.com)



[Jakarta@RafflesIndonesia.com](mailto:Jakarta@RafflesIndonesia.com)



[@RafflesJakarta](https://www.instagram.com/RafflesJakarta)



+62 21 2555 6738

Australia · Cambodia · China · India · **Indonesia** · Italy · Malaysia · Mongolia  
Saudi Arabia · Singapore · Sri Lanka · Switzerland · Thailand

# The World's Most Recognized University



*A university preparation program that provides students with the academic knowledge, skills and confidence to enter and successfully complete a Bachelor's degree.*

## Our Centers in Indonesia:

### JAKARTA

- Penabur Secondary Tanjung Duren
- Penabur Kelapa Gading
- Raffles Christian School, Kebon Jeruk
- Sekolah Perkumpulan Mandiri
- Teach Indonesia School

### BOGOR

- BPK Penabur, Sentul City
- Sekolah Bogor Raya

### BEKASI

- Sekolah Mahanaim

### BANDUNG

- Temasek Independent School

### YOGYAKARTA

- SMA Internasional Budi Mulia Dua

### SEMARANG

- Sekolah Kristen Terang Bangsa

### SURABAYA

- Elyon Christian School
- Nation Star Academy

## Helping people achieve education and workp



+62 21 3199 1451



[jakartaoffice@acteducationsolutions.com](mailto:jakartaoffice@acteducationsolutions.com)



Global Assessment Certificate in SEAsia

# Preparation Program



GLOBAL ASSESSMENT CERTIFICATE





## WHY THE GAC

- Developing competencies and skills for the 21<sup>st</sup> century
  - Delivered to thousands of students around the world
- Students can receive up to 44 credits at universities in the US
  - Complete US degree in 3 years or less
  - Higher overall GPA than any other group of students \*
- 38% of the GAC graduates attending the University of Iowa do double or triple majors
  - More credit at Iowa State University than IB or A Level students
  - Scholarships to Pathway Universities
- Better prepared for university than other international students
- Better prepared for the US culture than other international students

*\*based on the survey at the University of Iowa*

place success

& S Korea  GAC\_AES  [www.acteducationsolutions.com](http://www.acteducationsolutions.com)





**SINGAPORE SCHOOL,  
PANTAI INDAH KAPUK**

# Embrace a Better Future

*- since 2004*



**Visit Us for More Information:**

Jl. Mandara Indah 4, Pantai Indah Kapuk, Jakarta 14460, Indonesia

☎ (021) 588 3835

✉ [admission@sis-pik.com](mailto:admission@sis-pik.com)

📱 [sispik](https://www.instagram.com/sispik)

☎ (021) 588 3836

[www.sis-pik.com](http://www.sis-pik.com)

📍 Singapore School, Pantai Indah Kapuk



**Our Map**

**Pre-school | Primary | Secondary | Junior College**